

Nur für Forschungszwecke

PIP4K2A Polyklonaler Antikörper

Katalog-Nr.:12469-1-AP

3 Publikationen



Allgemeine Informationen

Katalog-Nr.:
12469-1-AP

Größe:
150ul, Konzentration: 600 µg/ml von
Nanodrop;

Wirt:
Kaninchen

Isotyp:
IgG

Immunogen Katalognummer:
AG3152

GenBank-Zugangsnummer:
BC018034

GeneID (NCBI):
5305

Vollständiger Name:
phosphatidylinositol-5-phosphate 4-
kinase, type II, alpha

Berechnete Masse:
406 aa, 46 kDa

Beobachtete Masse:
46 kDa

Reinigungsmethode:
Antigen-Affinitätsreinigung

Empfohlene Verdünnungen:
WB 1:500-1:2000

IP 0.5-4.0 µg für IP und 1:500-1:1000
für WB
IHC 1:50-1:500
IF 1:50-1:500

Anwendungen

Geprüfte Anwendungen:
IF, IHC, IP, WB, ELISA

In Publikationen genannte Anwendungen:
IF, IHC, IP, WB

Getestete Reaktivität:
Human, Maus, Ratte

Zitierte Arten:
Human, Maus

**Hinweis-IHC: Antigenmaskierung mit TE-
Puffer pH 9,0 empfohlen. (*) Wahlweise
kann die Antigenmaskierung auch mit
Citratpuffer pH 6,0 erfolgen.**

Positivkontrollen:

WB : Maushirngewebe, HeLa-Zellen, Rattenhirngewebe

IP : Maushirngewebe,

IHC : humanes Milzgewebe, Maushirngewebe

IF : SH-SY5Y-Zellen, HepG2-Zellen

Hintergrundinformationen

Bemerkenswerte Veröffentlichungen

Verfasser	Pubmed ID	Journal	Anwendung
Archana Ravi	33984270	Dev Cell	IF,IHC
Mei Zhang	35987479	Int J Biochem Cell Biol	IF,IHC,IP,WB
Joanna Triscott	36724278	Sci Adv	WB,IHC,IF

Lagerung

Lagerungsbedingungen:

Bei -20°C lagern. Nach dem Versand ein Jahr lang stabil

Lagerungspuffer:

PBS mit 0.02% Natriumazid und 50% Glycerin pH 7.3.

Aliquotieren ist nicht notwendig bei -20°C Lagerung

*** 20ul-Größen enthalten 0.1% BSA

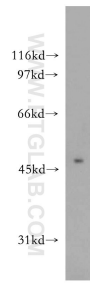
For technical support and original validation data for this product please contact:

T: 1 (888) 4PTGLAB (1-888-478-4522) (toll free
in USA), or 1(312) 455-8498 (outside USA)

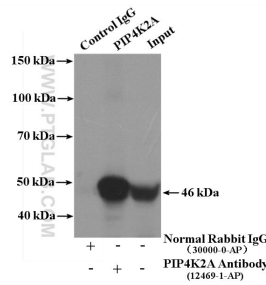
E: proteintech@ptglab.com
W: ptglab.com

This product is exclusively available under Proteintech
Group brand and is not available to purchase from any
other manufacturer.

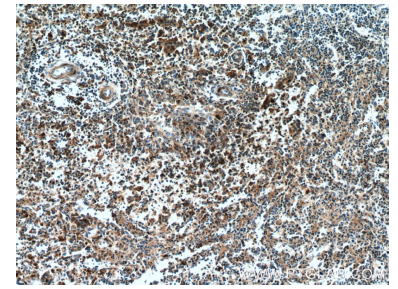
Ausgewählte Validierungsdaten



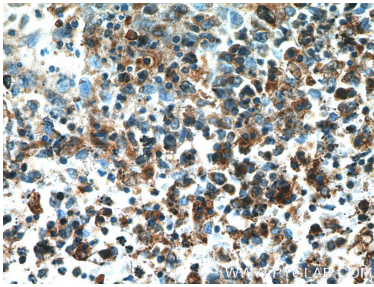
mouse brain tissue were subjected to SDS PAGE followed by western blot with 12469-1-AP (PIP4K2A antibody) at dilution of 1:500 incubated at room temperature for 1.5 hours.



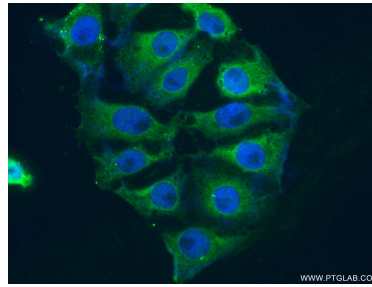
IP Result of anti-PIP4K2A (IP:12469-1-AP, 4ug; Detection:12469-1-AP 1:500) with mouse brain tissue lysate 4400ug.



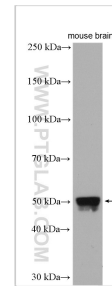
Immunohistochemical analysis of paraffin-embedded human spleen tissue slide using 12469-1-AP (PIP4K2A Antibody) at dilution of 1:200 (under 10x lens).



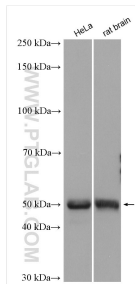
Immunohistochemical analysis of paraffin-embedded human spleen tissue slide using 12469-1-AP (PIP4K2A Antibody) at dilution of 1:200 (under 40x lens).



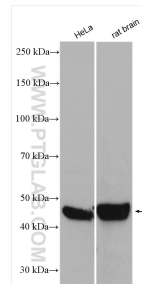
Immunofluorescent analysis of (4% PFA) fixed SH-SY5Y cells using 12469-1-AP (PIP4K2A antibody) at dilution of 1:50 and Alexa Fluor 488-conjugated AffiniPure Goat Anti-Rabbit IgG(H+L).



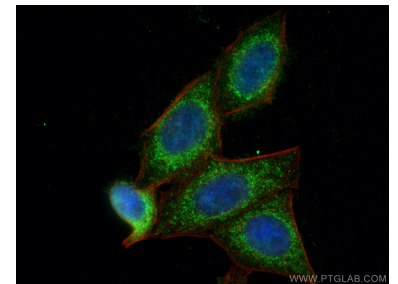
mouse brain tissue were subjected to SDS PAGE followed by western blot with 12469-1-AP (PIP4K2A antibody) at dilution of 1:800 incubated at room temperature for 1.5 hours.



Various lysates were subjected to SDS PAGE followed by western blot with 12469-1-AP (PIP4K2A antibody) at dilution of 1:3000 incubated at room temperature for 1.5 hours.



Various lysates were subjected to SDS PAGE followed by western blot with 12469-1-AP (PIP4K2A antibody) at dilution of 1:5000 incubated at room temperature for 1.5 hours.



Immunofluorescent analysis of (4% PFA) fixed HepG2 cells using PIP4K2A antibody (12469-1-AP) at dilution of 1:200 and CoraLite@488-Conjugated AffiniPure Goat Anti-Rabbit IgG(H+L), CL594-Phalloidin (black).