

Allgemeine Informationen

Katalog-Nr.:
12102-1-AP

Größe:

150ul, Konzentration: 1000 µg/ml von 57326

Nanodrop und 400 µg/ml durch die Bradford-Methode mit BSA als Standard;

Wirt:

Kaninchen

Isotyp:

IgG

Immunogen Katalognummer:

AG2746

GenBank-Zugangsnummer:

BC016852

GeneID (NCBI):

57326

Vollständiger Name:

pre-B-cell leukemia homeobox interacting protein 1

Berechnete Masse:

731 aa, 81 kDa

Beobachtete Masse:

95-100 kDa

Reinigungsmethode:

Antigen-Affinitätsreinigung

Empfohlene Verdünnungen:

WB 1:500-1:2000

IP 0.5-4.0 µg für IP und 1:500-1:1000

für WB

IHC 1:50-1:500

IF 1:10-1:100

Anwendungen

Geprüfte Anwendungen:

IF, IHC, IP, WB, ELISA

In Publikationen genannte Anwendungen:

ChIP, IF, IHC, WB

Getestete Reaktivität:

Human

Zitierte Arten:

Human, Maus

Hinweis-IHC: Antigendemaskierung mit TE-Puffer pH 9,0 empfohlen. (*) Wahlweise kann die Antigendemaskierung auch mit Citratpuffer pH 6,0 erfolgen.

Positivkontrollen:

WB: BxPC-3-Zellen, A549-Zellen, HeLa-Zellen

IP: HeLa-Zellen,

IHC: humanes Lungenkarzinomgewebe,

IF: HepG2-Zellen, HeLa-Zellen

Hintergrundinformationen

PBXIP1 (pre-B-cell leukemia transcription factor-interacting protein 1), also known as HPIP (hematopoietic PBX-interacting protein), is a regulator of pre-B-cell leukemia transcription factors (BPXs) function. PBXIP1 is a nucleocytoplasmic shuttling protein, mainly localized in the cytosol and in small amounts in the nucleus (PMID: 10825160). It interacts with PBX1 as well as PBX2 and PBX3. PBXIP1 inhibits the ability of PBX-HOX heterodimers to bind to target sequences and strongly inhibits the transactivation activity of E2A-PBX. PBXIP1 is also reported to be a microtubule-binding protein, which regulates estrogen receptor functions and plays a role in cancer development and progression (PMID: 17043237; 18302941; 23321675). The predicted PBXIP1 protein has a calculated molecular mass of 81 kDa. This polyclonal antibody raised against 1-300aa of human PBXIP1 recognizes endogenous PBXIP1 with an apparent molecular weight of 95-100 kDa. The slow migration of PBXIP1 possibly results from either post-translational modifications or intrinsic SDS-resistant folding of the protein (PMID: 10825160; 17043237).

Bemerkenswerte Veröffentlichungen

Verfasser	Pubmed ID	Journal	Anwendung
Bing Chen	27748944	Oncol Rep	
H Mai	27694835	Oncogenesis	WB, IHC, IF
Shun-Chang Wang	26463629	Biomed Pharmacother	WB

Lagerung

Lagerungsbedingungen:

Bei -20°C lagern. Nach dem Versand ein Jahr lang stabil

Lagerungspuffer:

PBS mit 0.02% Natriumazid und 50% Glycerin pH 7.3.

Aliquotieren ist nicht notwendig bei -20°C Lagerung

***** 20ul-Größen enthalten 0.1% BSA**

For technical support and original validation data for this product please contact:

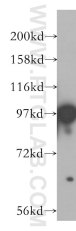
T: 1 (888) 4PTGLAB (1-888-478-4522) (toll free in USA), or 1(312) 455-8498 (outside USA)

E: proteintech@ptglab.com

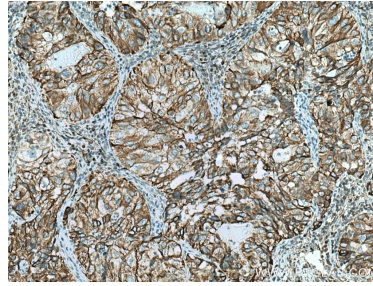
W: ptglab.com

This product is exclusively available under Proteintech Group brand and is not available to purchase from any other manufacturer.

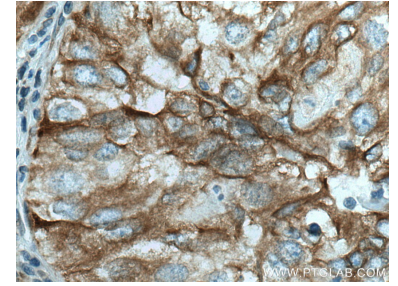
Ausgewählte Validierungsdaten



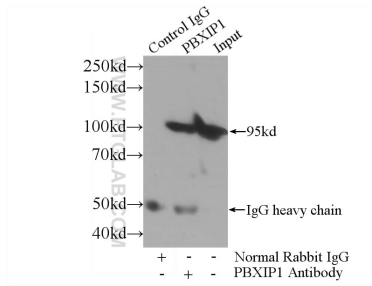
BxPC-3 cells were subjected to SDS PAGE followed by western blot with 12102-1-AP (PBXIP1 antibody) at dilution of 1:500 incubated at room temperature for 1.5 hours.



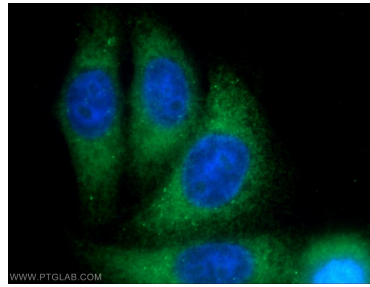
Immunohistochemical analysis of paraffin-embedded human lung cancer tissue slide using 12102-1-AP (PBXIP1 antibody) at dilution of 1:200 (under 10x lens). Heat mediated antigen retrieval with Tris-EDTA buffer (pH 9.0).



Immunohistochemical analysis of paraffin-embedded human lung cancer tissue slide using 12102-1-AP (PBXIP1 antibody) at dilution of 1:200 (under 40x lens). Heat mediated antigen retrieval with Tris-EDTA buffer (pH 9.0).



IP Result of anti-PBXIP1 (IP:12102-1-AP, 3ug; Detection:12102-1-AP 1:800) with HeLa cells lysate 3000ug.



Immunofluorescent analysis of HepG2 cells using 12102-1-AP (PBXIP1 antibody) at dilution of 1:25 and Alexa Fluor 488-conjugated AffiniPure Goat Anti-Rabbit IgG(H+L).