

Nur für Forschungszwecke

# Gelsolin Polyklonaler Antikörper

Katalog-Nr.: 11644-2-AP

Vorgestelltes Produkt

9 Publikationen



## Allgemeine Informationen

Katalog-Nr.:  
11644-2-AP

Größe:

150ul, Konzentration: 650 µg/ml von  
Nanodrop und 333 µg/ml durch die  
Bradford-Methode mit BSA als  
Standard;

Wirt:

Kaninchen

Isotyp:

IgG

Immunogen Katalognummer:  
AG2239

GenBank-Zugangsnummer:

BC026033

GeneID (NCBI):

2934

Vollständiger Name:

gelsolin (amyloidosis, Finnish type)

Berechnete Masse:

782 aa, 86 kDa

Beobachtete Masse:

87-93 kDa

Reinigungsmethode:

Antigen-Affinitätsreinigung

Empfohlene Verdünnungen:

WB 1:2000-1:16000

IHC 1:50-1:500

## Anwendungen

Geprüfte Anwendungen:

IHC, IP, WB, ELISA

In Publikationen genannte Anwendungen:

IF, IHC, WB

Getestete Reaktivität:

Human, Maus, Ratte

Zitierte Arten:

Human, Maus

**Hinweis-IHC: Antigendemaskierung mit TE-Puffer pH 9,0 empfohlen. (\*) Wahlweise kann die Antigendemaskierung auch mit Citratpuffer pH 6,0 erfolgen.**

Positivkontrollen:

WB: A549-Zellen, HeLa-Zellen, U2OS-Zellen

IHC: humanes Kolonkarzinomgewebe, humanes Prostatakarzinomgewebe

## Hintergrundinformationen

Gelsolin (GSN) is an actin binding protein that regulates actin-severing/depolymerizing in a calcium dependent manner, and acts as a multifunctional regulator for cell metabolism and survival. Gelsolin exists in two isoforms: a cytoplasmic gelsolin (cGSN; 80-90 kDa) and a plasma gelsolin (pGSN; 93 kDa), differing at N terminal residues. Decreased levels of pGSN are strongly associated with human diseases, such as, acute liver injury, major trauma, myocardial infarction, inflammation, lung injury, rheumatoid arthritis, hemodialysis, multiple sclerosis, Alzheimer's disease. Plasma gelsolin can interact with actin and form a complex of 130 kDa (PMID: 6330060, 3030756).

## Bemerkenswerte Veröffentlichungen

Verfasser	Pubmed ID	Journal	Anwendung
Moyuan Deng	32424991	Adv Healthc Mater	WB
Wu Jun J	23582786	Biomed Pharmacother	WB
Biao Deng	26149653	Gene	WB, IHC

## Lagerung

Lagerungsbedingungen:

Bei -20°C lagern. Nach dem Versand ein Jahr lang stabil

Lagerungspuffer:

PBS mit 0.02% Natriumazid und 50% Glycerin pH 7.3.

Aliquotieren ist nicht notwendig bei -20°C Lagerung

\*\*\* 20ul-Größen enthalten 0.1% BSA

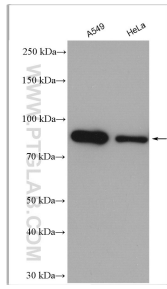
For technical support and original validation data for this product please contact:

T: 1 (888) 4PTGLAB (1-888-478-4522) (toll free  
in USA), or 1(312) 455-8498 (outside USA)

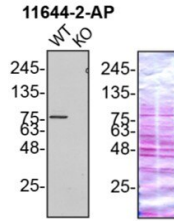
E: proteintech@ptglab.com  
W: ptglab.com

This product is exclusively available under Proteintech Group brand and is not available to purchase from any other manufacturer.

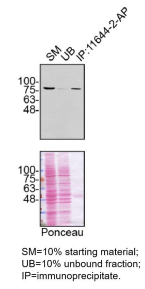
## Ausgewählte Validierungsdaten



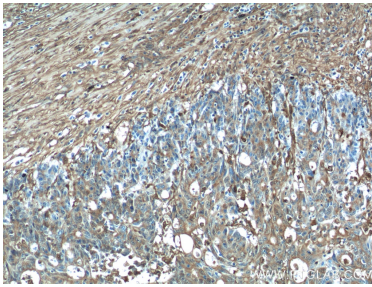
Various lysates were subjected to SDS PAGE followed by western blot with 11644-2-AP (Gelsolin antibody) at dilution of 1:8000 incubated at room temperature for 1.5 hours.



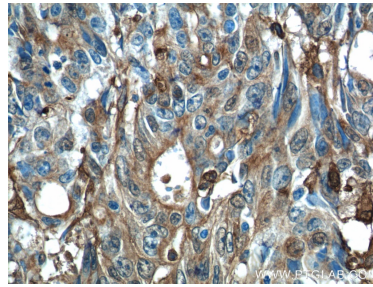
U2OS (WT and GSN KO) lysates prepared with RIPA buffer, 25 µg protein loaded. 11644-2-AP incubated at 1:5000 at 4°C overnight in 5% BSA in TBST. Ponceau stained transfers shown on right. Data provided by YCharOS, an open science company with a mission to validate commercial antibodies to improve scientific reproducibility and transparency.



U2OS lysates prepared and IP of GSN performed using 1.0 µg of 11644-2-AP coupled to protein A-Sepharose beads. The Ponceau stained transfers of each blot are shown. Data provided by YCharOS, an open science company with a mission to validate commercial antibodies to improve scientific reproducibility and transparency.



Immunohistochemical analysis of paraffin-embedded human colon cancer tissue slide using 11644-2-AP (Gelsolin Antibody) at dilution of 1:200 (under 10x lens).



Immunohistochemical analysis of paraffin-embedded human colon cancer tissue slide using 11644-2-AP (Gelsolin Antibody) at dilution of 1:200 (under 40x lens).