

Allgemeine Informationen

Katalog-Nr.:

11081-1-AP

Größe:

150ul, Konzentration: 400 µg/ml von Nanodrop und 300 µg/ml durch die Bradford-Methode mit BSA als Standard;

Wirt:

Kaninchen

Isotyp:

IgG

Immunogen Katalognummer:

AG1551

GenBank-Zugangsnummer:

BC011737

GeneID (NCBI):

7351

Vollständiger Name:

uncoupling protein 2 (mitochondrial, proton carrier)

Berechnete Masse:

33 kDa

Beobachtete Masse:

28-30 kDa

Reinigungsmethode:

Antigen-Affinitätsreinigung

Empfohlene Verdünnungen:

WB 1:500-1:2000

IHC 1:50-1:500

Anwendungen

Geprüfte Anwendungen:

IHC, WB, ELISA

In Publikationen genannte Anwendungen:

IF, IHC, WB

Getestete Reaktivität:

Human, Maus, Ratte

Zitierte Arten:

Hausschwein, Human, Maus, Ratte

Hinweis-IHC: Antigendemaskierung mit TE-Puffer pH 9,0 empfohlen. (*) Wahlweise kann die Antigendemaskierung auch mit Citratpuffer pH 6,0 erfolgen.

Positivkontrollen:

WB: Ratten-Skelettmuskelgewebe, Mausherzgewebe, Mausmilzgewebe, Maus-Skelettmuskelgewebe

IHC: humanes Zervixkarzinomgewebe, humanes Eierstockgewebe, humanes Kolonkarzinomgewebe, humanes Lebergewebe, humanes Leberzirrhosegewebe, humanes Skelettmuskelgewebe

Hintergrundinformationen

UCP2 (uncoupling protein 2) is a member of the mitochondrial carrier protein super family located in the mitochondrial inner membrane. The UCPs differ greatly in tissue distribution: UCP1 is expressed only in brown adipose; UCP3 preferentially in skeletal muscle, brown adipose and heart; UCP4 and UCP5 mainly in the nervous system (18167556). In contrast, UCP2 has a broad distribution and is implicated in a wide range of pathophysiological processes, including diabetes and cancer. This antibody detect a band around 28-33 kDa corresponding to UCP2 protein in mouse liver, skeletal muscle and pancreas. Some upper and lower bands also were observed due to the dimer formation and degradation of the UCP2 protein (20103532). This antibody was raised against the full-length UCP2 protein and may cross-react with UCP3. It is notable that UCP2 is known to have a very short half-life less than 1 hour (17240372). It is strongly recommended that fresh-made lysate be used for western blot assays.

Bemerkenswerte Veröffentlichungen

Verfasser	Pubmed ID	Journal	Anwendung
Hong Zhong	30235442	Cell Physiol Biochem	WB
María Rodríguez-Hidalgo	30228311	Sci Rep	WB
Shilong Zhang	33013386	Front Pharmacol	WB

Lagerung

Lagerungsbedingungen:

Bei -20°C lagern. Nach dem Versand ein Jahr lang stabil

Lagerungspuffer:

PBS mit 0.02% Natriumazid und 50% Glycerin pH 7.3.

Aliquotieren ist nicht notwendig bei -20°C Lagerung

*** 20ul-Größen enthalten 0.1% BSA

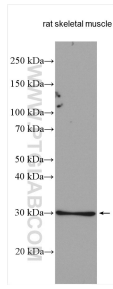
For technical support and original validation data for this product please contact:

T: 1 (888) 4PTGLAB (1-888-478-4522) (toll free in USA), or 1(312) 455-8498 (outside USA)

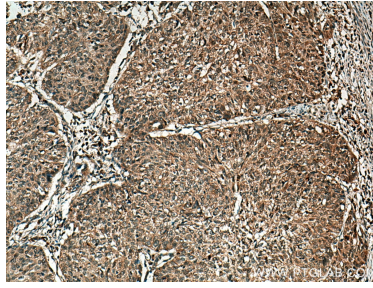
E: proteintech@ptglab.com
 W: ptglab.com

This product is exclusively available under Proteintech Group brand and is not available to purchase from any other manufacturer.

Ausgewählte Validierungsdaten



Rat skeletal muscle lysates were subjected to SDS PAGE followed by western blot with 11081-1-AP (UCP2 antibody) at dilution of 1:1000 incubated at room temperature for 1.5 hours.



Immunohistochemical analysis of paraffin-embedded human cervical cancer tissue slide using 11081-1-AP (UCP2 antibody) at dilution of 1:200 (under 10x lens). Heat mediated antigen retrieval with Tris-EDTA buffer (pH 9.0).