

Nur für Forschungszwecke

ATP1A3 (C-terminal) Polyklonaler Antikörper



Katalog-Nr.: 10868-1-AP

3 Publikationen

Allgemeine Informationen

Katalog-Nr.: 10868-1-AP	GenBank-Zugangsnummer: BC015566	Reinigungsmethode: Antigen-Affinitätsreinigung
Größe: 150ul, Konzentration: 330 µg/ml von Nanodrop und 333 µg/ml durch die Bradford-Methode mit BSA als Standard;	GeneID (NCBI): 478	Empfohlene Verdünnungen: WB 1:500-1:3000 IHC 1:50-1:500 IF 1:50-1:500
Wirt: Kaninchen	Vollständiger Name: ATPase, Na ⁺ /K ⁺ transporting, alpha 3 polypeptide	
Isotyp: IgG	Berechnete Masse: 113 kDa	
Immunogen Katalognummer: AG1313	Beobachtete Masse: 100-113 kDa	

Anwendungen

Geprüfte Anwendungen:

IF, IHC, WB, ELISA

In Publikationen genannte Anwendungen:

IHC, WB

Getestete Reaktivität:

Human, Maus, Ratte

Zitierte Arten:

Human

Hinweis-IHC: Antigenmaskierung mit TE-Puffer pH 9,0 empfohlen. (*) Wahlweise kann die Antigenmaskierung auch mit Citratpuffer pH 6,0 erfolgen.

Positivkontrollen:

WB : C2C12 cell, C2C12-Zellen

IHC : humanes Prostatakarzinomgewebe, humanes Cerebellum-Gewebe, Maushirngewebe, Maus-Skelettmuskelgewebe

IF : Maushirngewebe,

Hintergrundinformationen

ATP1A3 participates in the catalytic hydrolysis of ATP and the exchanging of sodium and potassium ions across plasma membrane. The catalytic activity mode is $ATP + H_2O + Na^+(In) + K^+(Out) = ADP + phosphate + Na^+(Out) + K^+(In)$. It has been published that the neurologic disorders rapid-onset dystonia-parkinsonism (RDP), alternating hemiplegia of childhood (ACH) and CAPOS syndrome (cerebellar ataxia, areflexia, pes cavus, optic atrophy and sensorineural hearing loss) are all related with the mutation of ATP1A3. There are other reports suggest that early life epilepsy and episodic apnea revealing are potentially associated with the mutation of ATP1A3 as a result of impairment of Na/K homeostasis. This antibody is generated against the C-terminal region (665-1013aa) of ATP1A3 and detects the band around 100-113 kDa in SDS-PAGE. (PMID: 30097153, 20301294, 29922587)

Bemerkenswerte Veröffentlichungen

Verfasser	Pubmed ID	Journal	Anwendung
Di Wu	34868940	Front Oncol	WB
Wei Huang	32684846	Cancer Cell Int	IHC
Qiankun Ji	36627101	Life Sci	WB, IHC

Lagerung

Lagerungsbedingungen:

Bei -20°C lagern. Nach dem Versand ein Jahr lang stabil

Lagerungspuffer:

PBS mit 0.02% Natriumazid und 50% Glycerin pH 7.3.

Aliquotieren ist nicht notwendig bei -20°C Lagerung

*** 20ul-Größen enthalten 0.1% BSA

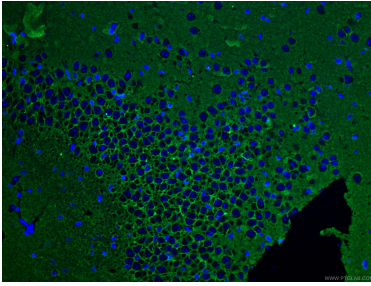
For technical support and original validation data for this product please contact:

T: 1 (888) 4PTGLAB (1-888-478-4522) (toll free in USA), or 1(312) 455-8498 (outside USA)

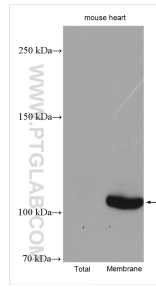
E: proteintech@ptglab.com
W: ptglab.com

This product is exclusively available under Proteintech Group brand and is not available to purchase from any other manufacturer.

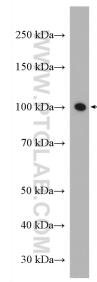
Ausgewählte Validierungsdaten



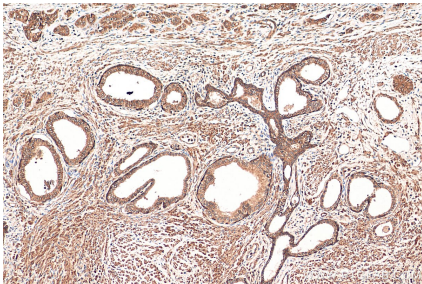
Immunofluorescent analysis of (4% PFA) fixed mouse brain tissue using 10868-1-AP (ATP1A3 (C-terminal) antibody), at dilution of 1:100 and CoraLite@488-Conjugated AffiniPure Goat Anti-Rabbit IgG(H+L).



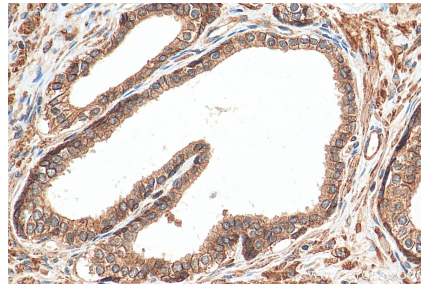
Various lysates were subjected to SDS PAGE followed by western blot with 10868-1-AP (ATP1A3 (C-terminal) antibody) at dilution of 1:3000 incubated at room temperature for 1.5 hours.



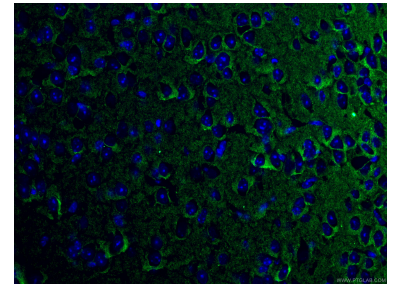
C2C12 cell were subjected to SDS PAGE followed by western blot with 10868-1-AP (ATP1A3 antibody) at dilution of 1:1500 incubated at room temperature for 1.5 hours.



Immunohistochemical analysis of paraffin-embedded human prostate cancer tissue slide using 10868-1-AP (ATP1A3 (C-terminal) antibody) at dilution of 1:200 (under 10x lens). Heat mediated antigen retrieval with Tris-EDTA buffer (pH 9.0).



Immunohistochemical analysis of paraffin-embedded human prostate cancer tissue slide using 10868-1-AP (ATP1A3 (C-terminal) antibody) at dilution of 1:200 (under 40x lens). Heat mediated antigen retrieval with Tris-EDTA buffer (pH 9.0).



Immunofluorescent analysis of (4% PFA) fixed mouse brain tissue using 10868-1-AP (ATP1A3 (C-terminal) antibody), at dilution of 1:100 and CoraLite@488-Conjugated AffiniPure Goat Anti-Rabbit IgG(H+L).