

Nur für Forschungszwecke

Geminin Polyklonaler Antikörper

Katalog-Nr.:10802-1-AP

Vorgestelltes Produkt

52 Publikationen



Allgemeine Informationen

Katalog-Nr.: 10802-1-AP	GenBank-Zugangsnummer: BC005185	Reinigungsmethode: Antigen-Affinitätsreinigung
Größe: 150ul , Konzentration: 1000 µg/ml von51053 Nanodrop;	GeneID (NCBI): Vollständiger Name: geminin, DNA replication inhibitor	Empfohlene Verdünnungen: WB 1:2000-1:12000 IP 0.5-4.0 ug für IP und 1:500-1:2000 für WB
Wirt: Kaninchen	Berechnete Masse: 24 kDa	IHC 1:50-1:500 IF 1:50-1:500
Isotyp: IgG	Beobachtete Masse: 28-29 kDa	
Immunogen Katalognummer: AG1076		

Anwendungen

Geprüfte Anwendungen:
FC, IF, IHC, IP, WB, ELISA

In Publikationen genannte Anwendungen:
IF, IHC, IP, WB

Getestete Reaktivität:
Human, Maus, Ratte

Zitierte Arten:
Human, Maus

Hinweis-IHC: Antigenmaskierung mit TE-Puffer pH 9,0 empfohlen. (*) Wahlweise kann die Antigenmaskierung auch mit Citratpuffer pH 6,0 erfolgen.

Positivkontrollen:

WB : HEK-293-Zellen, humanes Hodengewebe, Maushodengewebe, Rattenhodengewebe

IP : HEK-293-Zellen,

IHC : humanes Kolonkarzinomgewebe, humanes Mammakarzinomgewebe

IF : HepG2-Zellen,

Hintergrundinformationen

GMNN, also designated geminin, contains 212 amino acids and has a destruction box sequence (RRTLKVIQP). GMNN participates in inhibiting DNA replication by preventing the incorporation of MCM complex into the pre-replication complex (pre-RC). It is degraded during the metaphase-anaphase transition of cell cycle's mitotic phase, which permits replication in the succeeding cell cycle. GMNN has a broad sedimentation profile ranging from about 25 kDa to 90 kDa, with a major peak at 30 kDa. Scanning of the signals shows that discrete peaks corresponding to the apparent mass of 42.5 kDa and 66 kDa are present. The dimer of geminin(50 kDa) can also be detected. (PMID: 15313623)

Bemerkenswerte Veröffentlichungen

Verfasser	Pubmed ID	Journal	Anwendung
Haile Zhao	34658851	Front Pharmacol	WB,IP
Lise M van Wijk	33003546	Cancers (Basel)	IF
A Llop-Guevara	34520831	Ann Oncol	IF

Lagerung

Lagerungsbedingungen:

Bei -20°C lagern. Nach dem Versand ein Jahr lang stabil

Lagerungspuffer:

PBS mit 0.02% Natriumazid und 50% Glycerin pH 7.3.

Aliquotieren ist nicht notwendig bei -20°C Lagerung

***** 20ul-Größen enthalten 0.1% BSA**

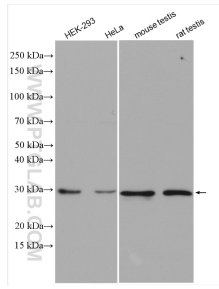
For technical support and original validation data for this product please contact:

T: 1 (888) 4PTGLAB (1-888-478-4522) (toll free in USA), or 1(312) 455-8498 (outside USA)

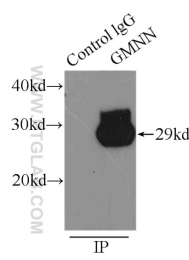
E: proteintech@ptglab.com
W: ptglab.com

This product is exclusively available under Proteintech Group brand and is not available to purchase from any other manufacturer.

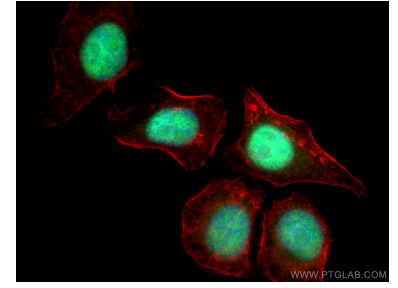
Ausgewählte Validierungsdaten



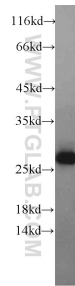
Various lysates were subjected to SDS PAGE followed by western blot with 10802-1-AP (Geminin antibody) at dilution of 1:6000 incubated at room temperature for 1.5 hours.



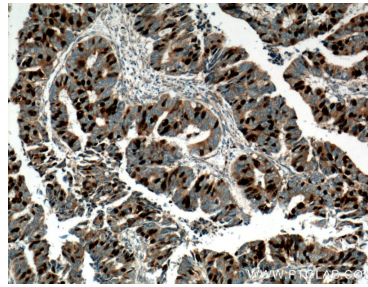
IP Result of anti-Geminin (IP:10802-1-AP, 4ug; Detection:10802-1-AP 1:1000) with HEK-293 cells lysate 4500ug.



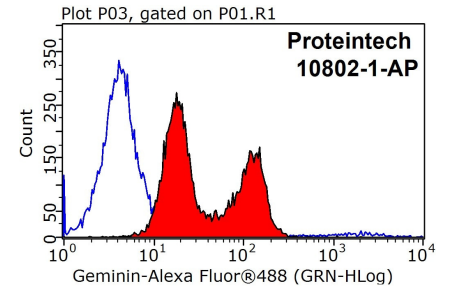
Immunofluorescent analysis of (4% PFA) fixed HepG2 cells using 10802-1-AP (Geminin antibody), at dilution of 1:200 and Coralite@488-Conjugated AffiniPure Goat Anti-Rabbit IgG(H+L).



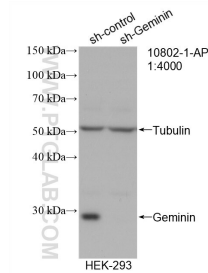
human testis tissue were subjected to SDS PAGE followed by western blot with 10802-1-AP (Geminin antibody) at dilution of 1:300 incubated at room temperature for 1.5 hours.



Immunohistochemical analysis of paraffin-embedded human colon cancer tissue slide using 10802-1-AP (Geminin antibody at dilution of 1:200 (under 10x lens). Heat mediated antigen retrieval with Tris-EDTA buffer (pH 9.0).



1X10⁶ MCF-7 cells were stained with 0.2ug Geminin antibody (10802-1-AP, red) and control antibody (blue). Fixed with 90% MeOH blocked with 3% BSA (30 min). Alexa Fluor 488-conjugated AffiniPure Goat Anti-Rabbit IgG(H+L) with dilution 1:1000.



WB result of Geminin antibody (10802-1-AP; 1:4000; incubated at room temperature for 1.5 hours) with sh-Control and sh-Geminin transfected HEK-293 cells.