

Allgemeine Informationen

Katalog-Nr.: 10494-1-AP	GenBank-Zugangsnummer: BC004109	Reinigungsmethode: Antigen-Affinitätsreinigung
Größe: 150ul , Konzentration: 333 µg/ml durch die Bradford-Methode mit BSA als Standard;	GeneID (NCBI): 2597	Empfohlene Verdünnungen: WB 1:5000-1:40000 IP 0.5-4.0 ug für IP und 1:1000-1:6000 für WB
Wirt: Kaninchen	Vollständiger Name: glyceraldehyde-3-phosphate dehydrogenase	IHC 1:200-1:800 IF 1:500-1:2000
Isotyp: IgG	Berechnete Masse: 36 kDa	
Immunogen Katalognummer: AG0766	Beobachtete Masse: 36 kDa	

Anwendungen

Geprüfte Anwendungen:

FC, IF, IHC, IP, WB, ELISA

In Publikationen genannte Anwendungen:

ColP, ELISA, IF, IHC, IP, RIP, WB

Getestete Reaktivität:

Arabidopsis, Cabbage, Hausschwein, Human, Kohl, Mais, Maus, Ratte, Reis

Zitierte Arten:

Arabidopsis, Caenorhabditis Elegans, Fisch, Hamster, Huhn, Human, Hund, Rind, Ziege

Hinweis-IHC: Antigenmaskierung mit TE-Puffer pH 9,0 empfohlen. (*) Wahlweise kann die Antigenmaskierung auch mit Citratpuffer pH 6,0 erfolgen.

Positivkontrollen:

WB : humanes Plazenta-Gewebe, Arabidopsis-Gewebe (aus der gesamten Pflanze), C6-Zellen, HEK-293-Zellen, HeLa-Zellen, HepG2-Zellen, Jurkat-Zellen, K-562-Zellen, Maisgewebe (aus der gesamten Pflanze), Maushautgewebe, Mausherzgewebe, Maushirngewebe, NIH/3T3-Zellen, PC-13-Zellen, Raji-Zellen, Rattenhirngewebe, RAW 264.7-Zellen

IP : A549-Zellen,

IHC : humanes Mammakarzinomgewebe, humanes Lungenkarzinomgewebe

IF : HeLa-Zellen, HepG2-Zellen

Hintergrundinformationen

Glyceraldehyde-3-phosphate dehydrogenase (GAPDH) catalyzes the phosphorylation of glyceraldehyde-3-phosphate during glycolysis. GAPDH participates in nuclear events including transcription, binding RNA, RNA transportation, DNA replication, DNA repair and apoptosis. Being stably and constitutively expressed at high levels in most tissues and cells, GAPDH is considered a housekeeping protein. It is widely used as a control for RT-PCR and also loading control in electrophoresis and Western blotting. GAPDH is normally expressed in cellular cytoplasm or membrane, but can occasionally translocate to the nucleus after the addition of post-translational modifications such as S-nitrosylation. This antibody is raised against full length GAPDH of human origin. It can recognize the 36 kDa GAPDH protein in most cells/tissues. In addition, a band below 36 kDa can always be detected as the isoform or spliced product of GAPDH (PMID: 23885286, 23877755, 19368702). Please note that some physiological factors, such as hypoxia and diabetes, increase GAPDH expression in certain cell types.

Bemerkenswerte Veröffentlichungen

Verfasser	Pubmed ID	Journal	Anwendung
Xin Xu	36178722	Environ Toxicol	WB
Hejie Wang	36178582	In Vitro Cell Dev Biol Anim	WB
Xin Wen	36249018	Front Oncol	WB

Lagerung

Lagerungsbedingungen:

Bei -20°C lagern. Nach dem Versand ein Jahr lang stabil

Lagerungspuffer:

PBS mit 0.02% Natriumazid und 50% Glycerin pH 7.3.

Aliquotieren ist nicht notwendig bei -20°C Lagerung

***** 20ul-Größen enthalten 0.1% BSA**

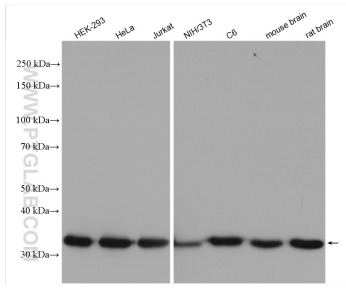
For technical support and original validation data for this product please contact:

T: 1 (888) 4PTGLAB (1-888-478-4522) (toll free in USA), or 1(312) 455-8498 (outside USA)

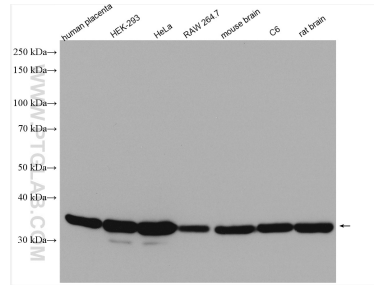
E: proteintech@ptglab.com
W: ptglab.com

This product is exclusively available under Proteintech Group brand and is not available to purchase from any other manufacturer.

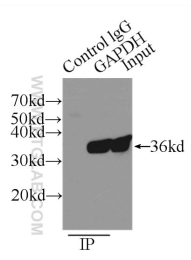
Ausgewählte Validierungsdaten



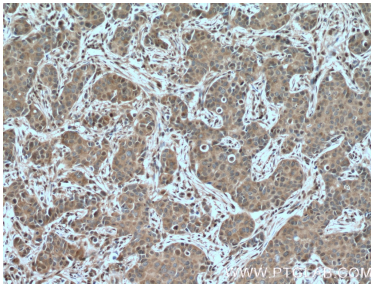
Various lysates were subjected to SDS PAGE followed by western blot with 10494-1-AP (GAPDH antibody) at dilution of 1:20000 incubated at room temperature for 1.5 hours.



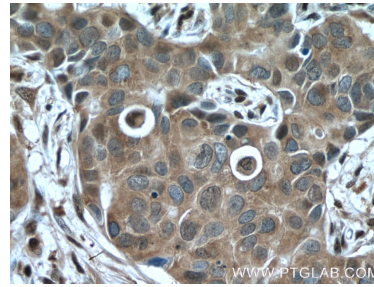
Various lysates were subjected to SDS PAGE followed by western blot with 10494-1-AP (GAPDH antibody) at dilution of 1:20000 incubated at room temperature for 1.5 hours.



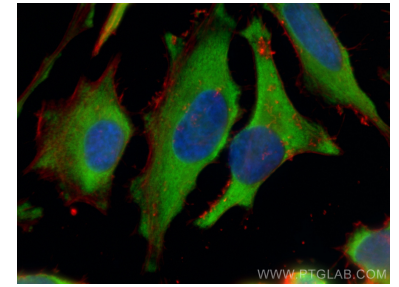
IP Result of anti-GAPDH (IP:10494-1-AP, 3ug; Detection:10494-1-AP 1:3000) with A549 cells lysate 3500ug.



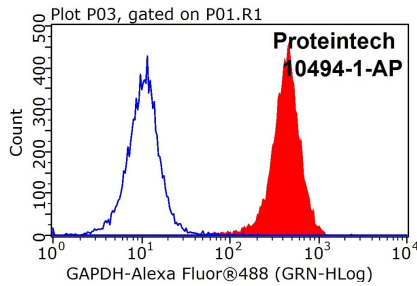
Immunohistochemical analysis of paraffin-embedded human breast cancer tissue slide using 10494-1-AP (GAPDH antibody) at dilution of 1:400 (under 10x lens. Heat mediated antigen retrieval with Tris-EDTA buffer (pH 9.0).



Immunohistochemical analysis of paraffin-embedded human breast cancer tissue slide using 10494-1-AP (GAPDH antibody) at dilution of 1:400 (under 40x lens. Heat mediated antigen retrieval with Tris-EDTA buffer (pH 9.0).



Immunofluorescent analysis of (-20°C Methanol) fixed HeLa cells using GAPDH antibody (10494-1-AP) at dilution of 1:1000 and CoraLite®488-Conjugated AffiniPure Goat Anti-Rabbit IgG(H+L), CoraLite®594 Beta Actin antibody (CL594-66009, Clone: 2D4H5, red).



1X10⁶ HEK-293 cells were stained with .2ug GAPDH antibody (10494-1-AP, red) and control antibody (blue). Fixed with 90% MeOH blocked with 3% BSA (30 min). Alexa Fluor 488-Goat anti-Rabbit IgG with dilution 1:100.