

Allgemeine Informationen

| | | |
|---|--|--|
| Katalog-Nr.: 10315-1-AP | GenBank-Zugangsnummer: BC002479 | Reinigungsmethode: Antigen-Affinitätsreinigung |
| Größe: 150ul , Konzentration: 500 µg/ml von Nanodrop; | GeneID (NCBI): 1512 | Empfohlene Verdünnungen: WB 1:1000-1:6000 IHC 1:50-1:500 IF 1:20-1:200 |
| Wirt: Kaninchen | Vollständiger Name: cathepsin H | |
| Isotyp: IgG | Berechnete Masse: 41 kDa, 28 kDa | |
| Immunogen Katalognummer: AG0361 | Beobachtete Masse: 28, 41 kDa | |

Anwendungen

Geprüfte Anwendungen:

IF, IHC, WB, ELISA

In Publikationen genannte Anwendungen:

FC, IHC, WB

Getestete Reaktivität:

Human, Maus, Ratte

Zitierte Arten:

Human, Maus, Ratte

Hinweis-IHC: Antigenmaskierung mit TE-Puffer pH 9,0 empfohlen. (*) Wahlweise kann die Antigenmaskierung auch mit Citratpuffer pH 6,0 erfolgen.

Positivkontrollen:

WB : A431-Zellen, HaCaT-Zellen, Raji-Zellen, U-937-Zellen

IHC : humanes Lungenkarzinomgewebe,

IF : HepG2-Zellen,

Hintergrundinformationen

Cathepsin H (CTSH, synonyms: CPSB, MGC1519, minichain) is a lysosomal cysteine proteinase important in the overall degradation of lysosomal proteins. It is composed of a dimer of disulfide-linked heavy and light chains, both produced from a single protein precursor. This protein, which belongs to the peptidase C1 protein family, can act both as an aminopeptidase and as an endopeptidase. Increased expression of this gene has been correlated with malignant progression of prostate tumors. The observed 48 kDa form may be glycosylated CTSH.

Bemerkenswerte Veröffentlichungen

| Verfasser | Pubmed ID | Journal | Anwendung |
|-----------------|-----------|------------------|-----------|
| Tomoka Hasegawa | 31271212 | Microscopy (Oxf) | IHC |
| Dali Han | 30728504 | Nature | FC |
| Wu S-M SM | 21217776 | Oncogene | IHC |

Lagerung

Lagerungsbedingungen:

Bei -20°C lagern. Nach dem Versand ein Jahr lang stabil

Lagerungspuffer:

PBS mit 0.02% Natriumazid und 50% Glycerin pH 7.3.

Aliquotieren ist nicht notwendig bei -20°C Lagerung

*** 20ul-Größen enthalten 0.1% BSA

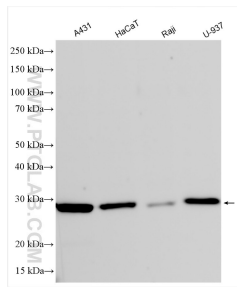
For technical support and original validation data for this product please contact:

T: 1 (888) 4PTGLAB (1-888-478-4522) (toll free in USA), or 1(312) 455-8498 (outside USA)

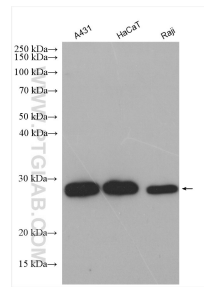
E: proteintech@ptglab.com
W: ptglab.com

This product is exclusively available under Proteintech Group brand and is not available to purchase from any other manufacturer.

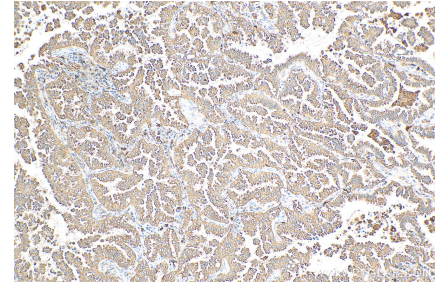
Ausgewählte Validierungsdaten



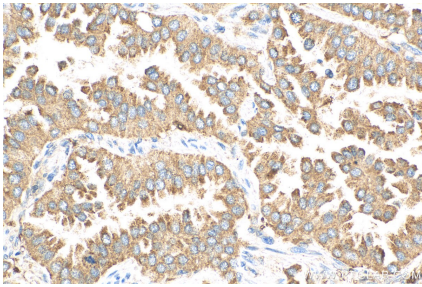
Various lysates were subjected to SDS PAGE followed by western blot with 10315-1-AP (Cathepsin H antibody) at dilution of 1:3000 incubated at room temperature for 1.5 hours.



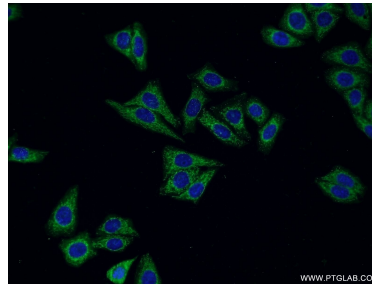
Various lysates were subjected to SDS PAGE followed by western blot with 10315-1-AP (Cathepsin H antibody) at dilution of 1:1500 incubated at room temperature for 1.5 hours.



Immunohistochemical analysis of paraffin-embedded human lung cancer tissue slide using 10315-1-AP (Cathepsin H antibody) at dilution of 1:200 (under 10x lens). Heat mediated antigen retrieval with Tris-EDTA buffer (pH 9.0).



Immunohistochemical analysis of paraffin-embedded human lung cancer tissue slide using 10315-1-AP (Cathepsin H antibody) at dilution of 1:200 (under 40x lens). Heat mediated antigen retrieval with Tris-EDTA buffer (pH 9.0).



Immunofluorescent analysis of HepG2 cells using 10315-1-AP (Cathepsin H antibody) at dilution of 1:50 and Alexa Fluor 488-conjugated AffiniPure Goat Anti-Rabbit IgG(H+L).