

For Research Use Only.  
Not For Use In Diagnostics.

# HRP-conjugated Affinipure Donkey Anti-Goat IgG(H+L)

Catalog Number:SA00001-3



[www.ptglab.com](http://www.ptglab.com)

## Information

**Catalog Number:**  
SA00001-3  
**Host:**  
Donkey  
**Applications:**  
ELISA, WB,, Dot blot

**Reactivity:**  
Goat (Minimal Cross Reactivity:  
Bovine, Chicken, Rabbit, Guinea Pig,  
Syrian Hamster, Horse, Human,  
Mouse, Rat, Sheep Serum Proteins)  
**Physical State:**  
Liquid  
**Conjugation:**  
HRP

**Clonality:**  
Polyclonal

## Recommended Dilutions

1:2000-1:10,000 for western blotting with ECL substrates  
1:1000-1:20,000 for ELISA and Western blotting with chromogenic substrates

## Stabilizer

3 mg/ml BSA

## Safety Notes

This product is for research use only,not for diagnostic or therapeutic use.

## Storage

**Storage:**  
Store at -20°C. Stable for one year after shipment.  
**Storage Buffer:**  
0.01 M Sodium phosphate, 0.25 M NaCl, 50% glycerol, 3 mg/ml BSA, pH 7.6.  
Aliquoting is unnecessary for -20°C storage

## Purity

The antibody was purified from antisera by immunoaffinity chromatography using antigens coupled to agarose beads.

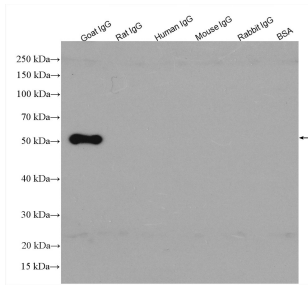
For technical support and original validation data for this product please contact:

T: 1 (888) 4PTGLAB  
(1-888-478-4522)  
(toll free in USA),  
or 1(312) 455-8498  
(outside USA)

E : [proteintech@ptglab.com](mailto:proteintech@ptglab.com)  
W: [ptglab.com](http://ptglab.com)

**This product is exclusively available under Proteintech Group brand and is not available to purchase from any other manufacturer.**

## Selected Validation Data



IgG proteins of various species were subjected to SDS PAGE followed by western blot with SA00001-3 (HRP-conjugated Affinipure Donkey Anti-Goat IgG(H+L) at dilution of 1:3000 incubated at room temperature for 1.5 hours.