

For Research Use Only

PE Mouse IgG2b Isotype Control (MPC-11)



Catalog Number: PE-65128

Basic Information

| | | |
|------------------------------------|--|---|
| Catalog Number: PE-65128 | GenBank Accession Number: GeneID (NCBI): 16016 | Purification Method: Affinity purification |
| Size: 100ug, 0.2 mg/ml | Full Name: immunoglobulin heavy chain 3 (serum IgG2b) | CloneNo.: MPC-11 |
| Source: Mouse | | Excitation/Emission maxima wavelengths: 496 nm, 565 nm / 578 nm |
| Isotype: IgG2b | | |

Applications

Tested Applications:
FC

Species Specificity:

Background Information

The MPC-11 immunoglobulin is useful as an isotype-matched control. The MPC-11 immunoglobulin has an unknown binding specificity and is used as an isotype control for mouse IgG2b antibodies. This antibody has been quality-tested for flow cytometry as negative control.

Storage

Storage:
Store at 2-8°C. Avoid exposure to light. Stable for one year after shipment.

Storage Buffer:
PBS with 0.09% sodium azide and 0.5% BSA.

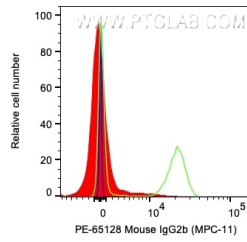
For technical support and original validation data for this product please contact:

T: 1 (888) 4PTGLAB (1-888-478-4522) (toll free
in USA), or 1(312) 455-8498 (outside USA)

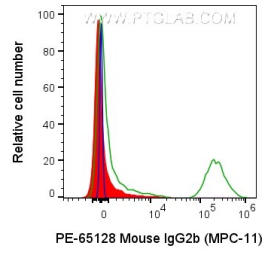
E: proteintech@ptglab.com
W: ptglab.com

This product is exclusively available under Proteintech Group brand and is not available to purchase from any other manufacturer.

Selected Validation Data



1X10⁶ human PBMCs were surface stained with 0.2 ug PE Mouse IgG2b Isotype Control (PE-65128, Clone: MPC-11) (red), PE Anti-Human CD4 (green), or unstained (blue). Cells were not fixed. Lymphocytes were gated.



1X10⁶ human PBMCs were surface stained with 0.2 ug PE Anti-Mouse IgG2b Isotype Control (PE-65128, Clone: MPC-11) (red), or PE Anti-Human CD20 (2H7) (green), or unstained (blue). Cells were not fixed. Lymphocytes were gated.