

**HumanKine<sup>®</sup> IL-28A (Recombinant Human)**



Animal Component-Free	Human cell expressed	Tag-Free	Endotoxin Free
-----------------------	----------------------	----------	----------------

**Product Description**

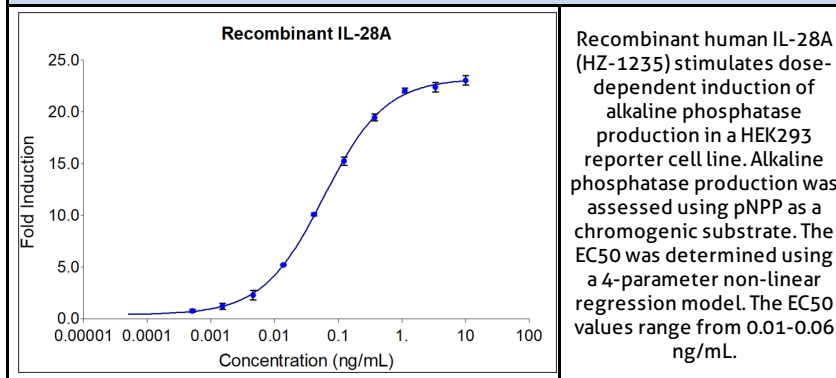
Animal-free Recombinant Human IL-28A (IFN lambda 2) is expressed in human 293 cells with an apparent molecular mass of 24 kDa. This cytokine is produced in a serum-free, chemically defined media. Production in human 293 cells offers authentic human post-translational modification which contributes to stability in cell growth media and other applications. The purity is greater than 95%.

Alternative Names	Cytokine Zcyto20, IFN lambda 2, IFNL2, IL 28A, IL28, IL-28, IL28A, IL-28A, Interferon lambda 2, Interleukin 28A, ZCYTO20
Source	Human Embryonic Kidney cells (HEK293). HEK293-derived IL-28A protein
Species Reactivity	human

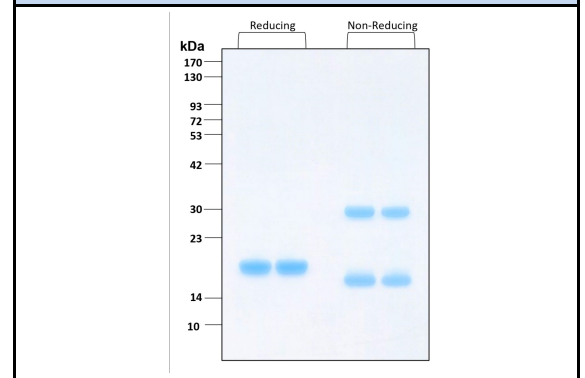
**Specifications**

Test	Method	Specification
Activity	Dose-dependent induction of alkaline phosphatase production in a HEK293 reporter cell line.	0.01-0.06 ng/mL
Molecular Mass	SDS-PAGE	22 kDa reduced, 19 and 35 kDa non-reduced, monomer, non-glycosylated
Purity	SDS-PAGE	>95%
Endotoxin	LAL	<1 EU/μg

**Activity Data**



**SDS-PAGE**



Preparation	
Shipping Temperature	ambient temperature
Formulation	1x PBS, See Certificate of Analysis for details
Reconstitution	Briefly centrifuge the vial before opening. It is recommended to reconstitute the protein to 0.2 mg/mL in sterile 1x PBS pH 7.4 containing 0.1% endotoxin-free recombinant human serum albumin (HSA). Gently swirl or tap vial to mix.

Stability and Storage	Product Form	Temperature Conditions	Storage Time (From Date of Receipt)
	Lyophilized	-20°C to -80°C	Until Expiry Date
	Lyophilized	Room Temperature	2 weeks
	Reconstituted as per CofA	-20°C to -80°C	6 months
	Reconstituted as per CofA	4°C	1 week
Avoid repeated freeze-thaw cycles.			

[www.ptglab.com](http://www.ptglab.com)

Document #: FR-QA118-101 Rev 0  
Data Sheet Version #: 1

**Proteintech Group, Inc.**  
5500 Pearl Street, Suite 400 Rosemont, IL 60612  
t: 1-888-478-4522; f: 1-312-455-8408  
Email: [proteintech@ptglab.com](mailto:proteintech@ptglab.com)