

HumanKine® IL-1 beta (Recombinant Human)



Animal Component-Free	Human cell expressed	Tag-Free	Endotoxin Free
-----------------------	----------------------	----------	----------------

Product Description

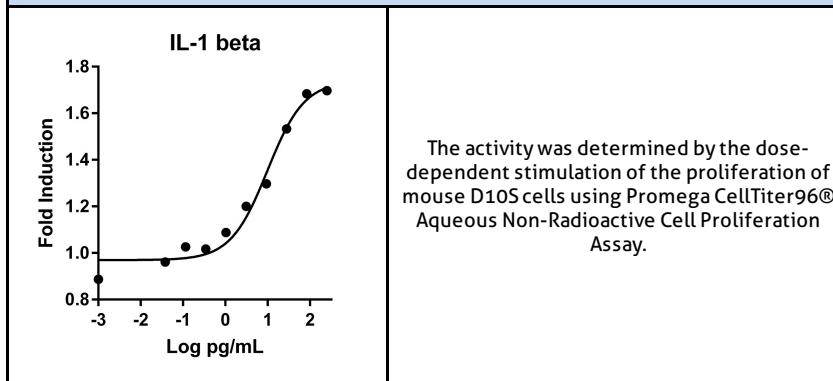
Animal-free Recombinant Human IL-1 beta expressed in human 293 cells has a very high activity with a typical EC50 of ≤ 0.1 ng/mL using a bioassay to measure stimulation of the proliferation of mouse D10S cells. In comparison with the E. coli expressed protein, IL-1 beta is 50% more potent promoting human CD4+ T cell differentiation into Th17 cells. This cytokine is important for inflammatory responses. It is also involved in a variety of cellular activities which includes cell differentiation, proliferation, and apoptosis. It is produced in a serum-free, chemically defined media.

Alternative Names	Catabolin, IL 1, IL 1 beta, IL1 BETA, IL-1 beta, IL1B, IL-1b, IL1beta, IL1F2, Interleukin 1 beta, interleukin 1, beta
Source	Human Embryonic Kidney cells (HEK293). HEK293-derived IL-1 beta protein

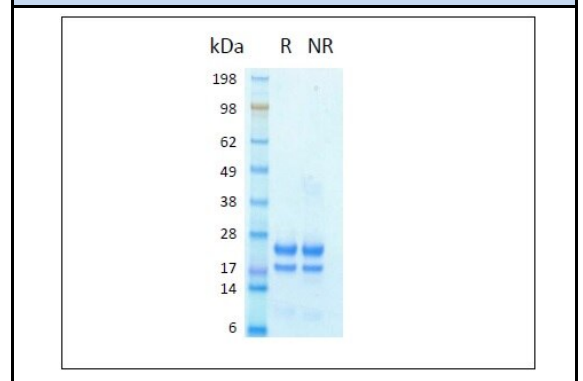
Specifications

Test	Method	Specification
Activity	Dose-dependent stimulation of the proliferation of mouse D10S cells	Typically ≤ 0.05 ng/mL EC50
Molecular Mass	SDS-PAGE	18 and 25 kDa, monomer, glycosylated
Purity	SDS-PAGE	>95%
Endotoxin	LAL	<1 EU/ μ g

Activity Data



SDS-PAGE



Preparation	
Shipping Temperature	ambient temperature
Formulation	1x PBS, See Certificate of Analysis for details
Reconstitution	Briefly centrifuge the vial before opening. It is recommended to reconstitute the protein in sterile 1xPBS containing 0.1% endotoxin-free recombinant human serum albumin (HSA).

Stability and Storage	Product Form	Temperature Conditions	Storage Time (From Date of Receipt)
	Lyophilized	-20°C to -80°C	Until Expiry Date
	Lyophilized	Room Temperature	2 weeks
	Reconstituted as per CofA	-20°C to -80°C	6 months
	Reconstituted as per CofA	4°C	1 week
Avoid repeated freeze-thaw cycles.			

www.ptglab.com

Document #: FR-QA118-101 Rev 0
Data Sheet Version #: 1

Proteintech Group, Inc.
5500 Pearl Street, Suite 400 Rosemont, IL 60612
t: 1-888-478-4522; f: 1-312-455-8408
Email: proteintech@ptglab.com