

**HumanKine<sup>®</sup> LEFTY-1 (Recombinant Human)**



Animal Component-Free	Human cell expressed	Tag-Free	Endotoxin Free
-----------------------	----------------------	----------	----------------

**Product Description**

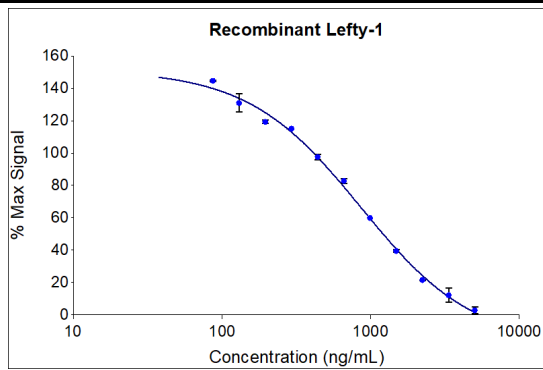
Animal-free Recombinant Human LEFTY-1 is expressed in human 293 cells as a monomeric glycoprotein with an apparent molecular mass of 38 kDa. This cytokine is produced in a human cell expression system with serum-free, chemically defined media. Production in human 293 cells offers authentic glycosylation, contributing to stability in cell growth media.

Alternative Names	LEFTB, LEFTY1, LEFTYB, Protein lefty 1, Protein lefty B
Source	Human Embryonic Kidney cells (HEK293). HEK293-derived LEFTY-1 protein
Species Reactivity	human,mouse

**Specifications**

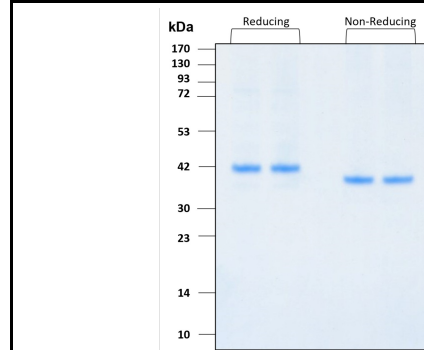
Test	Method	Specification
Activity	Dose-dependent inhibition of proliferation of the Mv1Lu cell line (mink lung epithelial cells)	Typically $\leq 2.5 \mu\text{g/mL}$
Molecular Mass	SDS-PAGE	43 kDa reduced, 40 and 43 kDa non-reduced, monomer, glycosylated
Purity	SDS-PAGE	>95%
Endotoxin	LAL	<1 EU/ $\mu\text{g}$

**Activity Data**



The activity of Lefty-1 was determined by the dose-dependent inhibition of proliferation of the Mv1Lu cell line (mink lung epithelial cells) using ProMega CellTiter96<sup>®</sup> aqueous Non-radioactive cell proliferation assay.

**SDS-PAGE**



Preparation	
Shipping Temperature	ambient temperature
Formulation	10 mM Tris pH 7.4 + 450 mM NaCl + 1% CHAPS, See Certificate of Analysis for details
Reconstitution	Briefly centrifuge the vial before opening. It is recommended to reconstitute the protein in sterile water containing 0.1% endotoxin-free recombinant human serum albumin (HSA). Gently swirl or tap vial to mix.

Stability and Storage	Product Form	Temperature Conditions	Storage Time (From Date of Receipt)
	Lyophilized	-20°C to -80°C	Until Expiry Date
	Lyophilized	Room Temperature	2 weeks
	Reconstituted as per CofA	-20°C to -80°C	6 months
	Reconstituted as per CofA	4°C	1 week
Avoid repeated freeze-thaw cycles.			

[www.ptglab.com](http://www.ptglab.com)

Document #: FR-QA118-101 Rev 0  
Data Sheet Version #: 1

**Proteintech Group, Inc.**  
5500 Pearl Street, Suite 400 Rosemont, IL 60612  
t: 1-888-478-4522; f: 1-312-455-8408  
Email: [proteintech@ptglab.com](mailto:proteintech@ptglab.com)