

HumanKine[®] HGH (Recombinant Human)



Animal Component-Free	Human cell expressed	Tag-Free	Endotoxin Free
-----------------------	----------------------	----------	----------------

Product Description

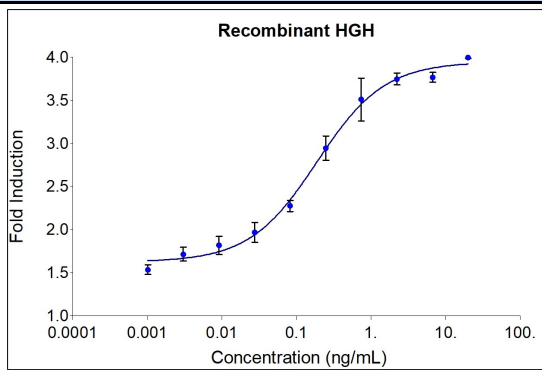
Animal-free Recombinant Human Human Growth Hormone (HGH) is expressed in human 293 cells with an apparent molecular mass of 22 kDa. It is also known as somatotropin and is a pleiotropic cytokine of the hematopoietic growth factor superfamily. The purity is greater than 95%. It is known primarily for its role in stimulating the development and differentiation of muscle, bone, and cartilage. This cytokine is produced in a serum-free, chemically defined media.

Alternative Names	GH, GH N, GH1, GHN, Growth hormone, growth hormone 1, hGH N, Pituitary growth hormone, Somatotropin
Source	Human Embryonic Kidney cells (HEK293). HEK293-derived HGH protein
Species Reactivity	human, rat

Specifications

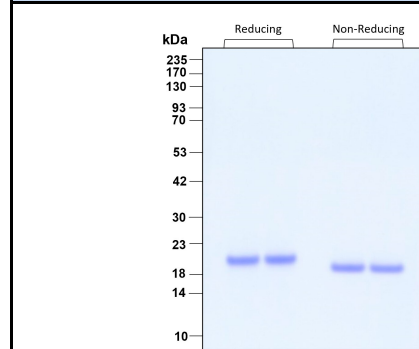
Test	Method	Specification
Activity	Dose-dependent stimulation of the proliferation of rat lymphoma line Nb2-11 cells (prolactin indicator cell line)	0.05-0.5 ng/mL EC50
Molecular Mass	SDS-PAGE	22 kDa, monomer, non-glycosylated
Purity	SDS-PAGE	>95%
Endotoxin	LAL	<1 EU/μg

Activity Data



The activity was determined by the dose-dependent stimulation of the proliferation of rat lymphoma line Nb2-11 cells (prolactin indicator cell line) using the Promega CellTiter96[®] Aqueous Non-Radioactive Cell Proliferation Assay.

SDS-PAGE



Preparation	
Shipping Temperature	ambient temperature
Formulation	1x PBS, See Certificate of Analysis for details
Reconstitution	Briefly centrifuge the vial before opening. It is recommended to reconstitute the protein in sterile 1xPBS pH 7.4 containing 0.1% endotoxin-free recombinant human serum albumin (HSA).

Stability and Storage	Product Form	Temperature Conditions	Storage Time (From Date of Receipt)
	Lyophilized	-20°C to -80°C	Until Expiry Date
	Lyophilized	Room Temperature	2 weeks
	Reconstituted as per CofA	-20°C to -80°C	6 months
	Reconstituted as per CofA	4°C	1 week
Avoid repeated freeze-thaw cycles.			

www.ptglab.com

Document #: FR-QA118-101 Rev 0
Data Sheet Version #: 1

Proteintech Group, Inc.
5500 Pearl Street, Suite 400 Rosemont, IL 60612
t: 1-888-478-4522; f: 1-312-455-8408
Email: proteintech@ptglab.com