

HumanKine[®] GM-CSF (Recombinant Human)



Animal Component-Free	Human cell expressed	Tag-Free	Endotoxin Free
-----------------------	----------------------	----------	----------------

Product Description

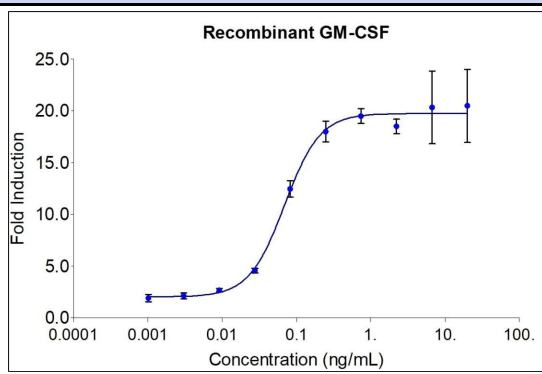
Animal-free Recombinant Human GM-CSF is produced in a human cell expression system in serum-free, chemically defined media. It has a demonstrated greater stability under cell culture conditions making it ideal for efficient generation of Human Dendritic Cells. GM-CSF is a hematopoietic growth factor that stimulates the development of early erythroid megakaryocytic and eosinophilic progenitor cells. It is produced in endothelial cells, monocytes, fibroblasts, and T lymphocytes. Recombinant Human GM-CSF is a 15 to 36 kDa globular protein consisting of 128 amino acids, containing two intramolecular disulfide bonds and two potential N-linked glycosylation sites.

Alternative Names	Colony stimulating factor, CSF, CSF2, GM CSF, GMCSF, GM-CSF, Molgramostin, Sargramostim
Source	Human Embryonic Kidney cells (HEK293). HEK293-derived GM-CSF protein
Species Reactivity	human,mouse,pig

Specifications

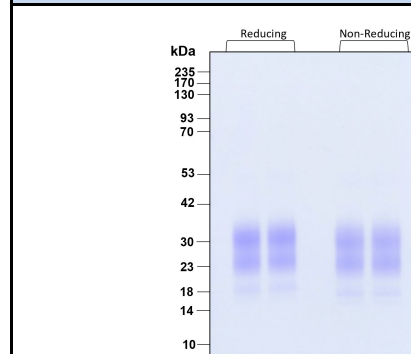
Test	Method	Specification
Activity	Dose-dependent stimulation of the proliferation of human TF-1 cells (human erythroleukemic indicator cell line)	0.08-0.8 ng/mL EC50
Molecular Mass	SDS-PAGE	15 to 36 kDa reduced and non-reduced, monomer, glycosylated
Purity	SDS-PAGE	>95%
Endotoxin	LAL	<1 EU/μg

Activity Data



The activity was determined by dose-dependent stimulation of proliferation in human TF-1 cells (human erythroleukemic indicator cell line) measured using Promega CellTiter96[®] Aqueous Non-Radioactive Cell Proliferation Assay.

SDS-PAGE



Preparation	
Shipping Temperature	ambient temperature
Formulation	1x PBS, See Certificate of Analysis for details
Reconstitution	Briefly centrifuge the vial before opening. It is recommended to reconstitute the protein in sterile 1xPBS pH 7.4 containing 0.1% endotoxin-free recombinant human serum albumin (HSA).

Stability and Storage	Product Form	Temperature Conditions	Storage Time (From Date of Receipt)
	Lyophilized	-20°C to -80°C	Until Expiry Date
	Lyophilized	Room Temperature	2 weeks
	Reconstituted as per CofA	-20°C to -80°C	6 months
	Reconstituted as per CofA	4°C	1 week
Avoid repeated freeze-thaw cycles.			

www.ptglab.com

Document #: FR-QA118-101 Rev 0
Data Sheet Version #: 1

Proteintech Group, Inc.
5500 Pearl Street, Suite 400 Rosemont, IL 60612
t: 1-888-478-4522; f: 1-312-455-8408
Email: proteintech@ptglab.com