

For Research Use Only

# CoraLite® Plus 750 Anti-Human CD45RA (F8-11-13)



Catalog Number: CL750-65226

## Basic Information

<b>Catalog Number:</b> CL750-65226	<b>GenBank Accession Number:</b> BC014239	<b>Purification Method:</b> Affinity purification
<b>Size:</b> 100tests , 5 µl/test	<b>GeneID (NCBI):</b> 5788	<b>CloneNo.:</b> F8-11-13
<b>Source:</b> Mouse	<b>Full Name:</b> protein tyrosine phosphatase, receptor type, C	<b>Excitation/Emission maxima wavelengths:</b> 755 nm / 780 nm
<b>Isotype:</b> IgG1, kappa	<b>Calculated MW:</b> 1304 aa, 147 kDa	

## Applications

**Tested Applications:**  
FC

**Species Specificity:**  
Human

## Background Information

CD45, also known as protein tyrosine phosphatase, receptor type C, is a type I transmembrane protein expressed on the surface of all haematopoietic cells with the exception of erythrocytes and platelets (PMID: 3489673; 28615666). CD45 is a pan-haematopoietic cell marker and has been shown to be essential for T- and B-cell activation and signalling (PMID: 9429890; 16378097). CD45 exists as multiple isoforms due to alternative splicing of three exons (4, 5, and 6, designated A, B, and C) in the extracellular domain (PMID: 12414720). CD45RA is expressed on naive T cells, B cells, and monocytes (PMID: 1830500; 14687231).

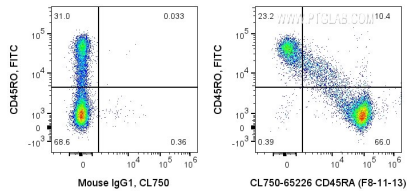
## Storage

**Storage:**  
Store at 2-8°C. Avoid exposure to light. Stable for one year after shipment.  
**Storage Buffer:**  
PBS with 0.09% sodium azide and 0.5% BSA.

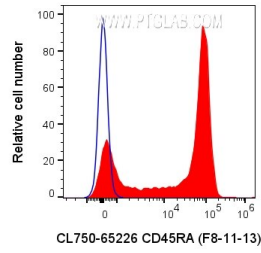
For technical support and original validation data for this product please contact:  
T: 1 (888) 4PTGLAB (1-888-478-4522) (toll free in USA), or 1(312) 455-8498 (outside USA)      E: proteintech@ptglab.com  
W: ptglab.com

This product is exclusively available under Proteintech Group brand and is not available to purchase from any other manufacturer.

## Selected Validation Data



$1 \times 10^6$  human PBMCs were surface co-stained with FITC Anti-Human CD45RO and 5  $\mu$ l CoraLite® Plus 750 Anti-Human CD45RA (CL750-65226, Clone: F8-11-13) or Mouse IgG1 Isotype Control. Cells were not fixed. Lymphocytes were gated.



$1 \times 10^6$  human PBMCs were surface stained with 5  $\mu$ l CoraLite® Plus 750 Anti-Human CD45RA (CL750-65226, Clone: F8-11-13) or Mouse IgG1 Isotype Control. Cells were not fixed. Lymphocytes were gated.