

For Research Use Only

CoraLite® Plus 750 Anti-Mouse Ly-6G/Ly-6C (Gr-1) (RB6-8C5)



Catalog Number: CL750-65140

Basic Information

| | | |
|---------------------------------------|--|---|
| Catalog Number: CL750-65140 | GenBank Accession Number: X70920 | Purification Method: Affinity purification |
| Size: 100ug, 0.5 mg/ml | GeneID (NCBI): 546644 | CloneNo.: RB6-8C5 |
| Source: Rat | Full Name: Lymphocyte antigen 6 complex, locus G | Excitation/Emission maxima wavelengths: 755 nm / 780 nm |
| Isotype: IgG2b, kappa | | |

Applications

Tested Applications:
FC

Species Specificity:
Mouse

Background Information

Ly-6G (Lymphocyte antigen 6 complex, locus G), also known as Gr-1, is a 21-25 kDa, glycosylphosphatidylinositol-anchored protein expressed on myeloid lineage cells in mouse bone marrow (PMID: 8360469). The expression of Ly-6G increases on neutrophils as they differentiate from immature cells in the bone marrow to mature cells in the blood and spleen (PMID: 8890901). Antibodies targeting Ly6G (RB6-8C5 or 1A8) are commonly used in studies aimed at identifying the role of neutrophils (PMID: 23543767). The RB6-8C5 mAb has been reported to cross-react with Ly-6C on cells expressing Ly-6C (PMID: 8360469).

Storage

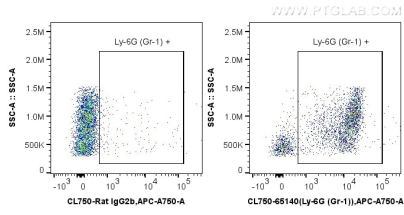
Storage:
Store at 2-8°C. Avoid exposure to light. Stable for one year after shipment.

Storage Buffer:
PBS with 0.09% sodium azide.

For technical support and original validation data for this product please contact:
T: 1 (888) 4PTGLAB (1-888-478-4522) (toll free in USA), or 1(312) 455-8498 (outside USA) E: proteintech@ptglab.com W: ptglab.com

This product is exclusively available under Proteintech Group brand and is not available to purchase from any other manufacturer.

Selected Validation Data



1X10⁶ mouse bone marrow cells were surface stained with 0.5 ug CoraLite® Plus 750 Anti-Mouse Ly-6G/Ly-6C (Gr-1) (CL750-65140, Clone: RB6-8C5), or 0.5 ug Control Antibody. Cells were not fixed.