

For Research Use Only

CoraLite® Plus 750 Anti-Human CD107a / LAMP1 (H4A3)



Catalog Number: CL750-65051

Basic Information

Catalog Number: CL750-65051	GenBank Accession Number: BC006345	Purification Method: Protein G purification
Size: 100tests , 5 µl/test	GeneID (NCBI): 3916	CloneNo.: H4A3
Source: Mouse	ENSEMBL Gene ID: ENSG00000185896	Excitation/Emission maxima wavelengths: 755 nm / 780 nm
Isotype: IgG1	UNIPROT ID: P11279	
	Full Name: lysosomal-associated membrane protein 1	

Applications

Tested Applications:
FC (Intra)

Species Specificity:
Human

Background Information

LAMP1 (CD107a) is a heavily glycosylated membrane protein enriched in the lysosomal membrane. LAMP1 is extensively glycosylated with asparagine-linked oligosaccharides which protect it from intracellular proteolysis (PMID: 10521503). Although LAMP1 is expressed largely in the endosome-lysosomal membrane of cells, it is also found on the plasma membrane (PMID: 16168398). Elevated LAMP1 expression at the cell surface has also been detected during platelet and granulocytic cell activation, as well as in some tumor cells (PMID: 29085473). LAMP1 functions to provide selectins with carbohydrate ligands. This protein has also been shown to be a marker of degranulation on lymphocytes such as CD8+ and NK cells and may also play a role in tumor cell differentiation and metastasis (PMID: 18835598; 29085473; 9426697).

Storage

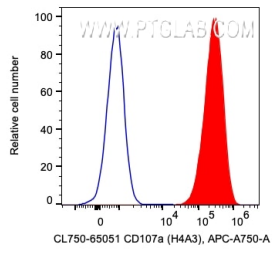
Storage:
Store at 2-8°C. Avoid exposure to light. Stable for one year after shipment.

Storage Buffer:
PBS with 0.09% sodium azide and 0.5% BSA.

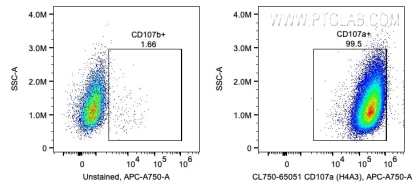
For technical support and original validation data for this product please contact:
T: 1 (888) 4PTGLAB (1-888-478-4522) (toll free in USA), or 1(312) 455-8498 (outside USA) E: proteintech@ptglab.com
W: ptglab.com

This product is exclusively available under Proteintech Group brand and is not available to purchase from any other manufacturer.

Selected Validation Data



1X10⁶ HeLa cells were intracellularly stained with 5 ul CoraLite® Plus 750 Anti-Human LAMP1 (CL750-65051, Clone:H4A3). Cells were fixed with 4% PFA and permeabilized with Intracellular Staining Permeabilization Wash Buffer.



1X10⁶ HeLa cells were intracellularly stained with 5 ul CoraLite® Plus 750 Anti-Human LAMP1 (CL750-65051, Clone:H4A3). Cells were fixed with 4% PFA and permeabilized with Intracellular Staining Permeabilization Wash Buffer.