

For Research Use Only

# CoraLite® Plus 647 Anti-Mouse CD16 / CD32 (2.4G2)



Catalog Number: CL647-65080

## Basic Information

<b>Catalog Number:</b> CL647-65080	<b>GenBank Accession Number:</b> BC038070	<b>Purification Method:</b> Affinity purification
<b>Size:</b> 100ug, 0.5 mg/ml	<b>GeneID (NCBI):</b> 14130	<b>CloneNo.:</b> 2.4G2
<b>Source:</b> Rat	<b>UNIPROT ID:</b> P08101	<b>Excitation/Emission maxima wavelengths:</b> 654 nm / 674 nm
<b>Isotype:</b> IgG2b, kappa	<b>Full Name:</b> Fc receptor, IgG, low affinity IIb	

## Applications

**Tested Applications:**  
FC

**Species Specificity:**  
Mouse

## Background Information

CD16 (FcyRIII) is a 50-70 kDa low affinity Fc receptor found on the surface of natural killer cells, neutrophil polymorphonuclear leukocytes, monocytes and macrophages. CD16 mediates antibody-dependent cellular cytotoxicity (ADCC) and other antibody-dependent responses, such as phagocytosis. CD32 (FcyRII) is a 40 kD transmembrane glycoprotein that binds to the Fc region of IgG with low affinity. CD32 is present on phagocytic cells such as macrophages and neutrophils, and is involved in the process of phagocytosis and clearing of immune complexes. The 2.4G2 antibody reacts with the extracellular domains of mouse CD16 (FcRIII) and CD32 (FcRII) (PMID: 90108; 8406898).

## Storage

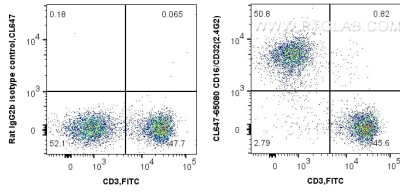
**Storage:**  
Store at 2-8°C. Avoid exposure to light. Stable for one year after shipment.

**Storage Buffer:**  
PBS with 0.1% sodium azide and 0.5% BSA, pH 7.3.

For technical support and original validation data for this product please contact:  
T: 1 (888) 4PTGLAB (1-888-478-4522) (toll free in USA), or 1(312) 455-8498 (outside USA)      E: proteintech@ptglab.com  
W: ptglab.com

This product is exclusively available under Proteintech Group brand and is not available to purchase from any other manufacturer.

## Selected Validation Data



1X10<sup>6</sup> C57BL/6 mouse splenocytes were surface co-stained with FITC Plus Anti-Mouse CD3 (17A2) and 0.125 ug CoraLite® Plus 647 Anti-Mouse CD16 / CD32 (CL647-65080, Clone:2.4G2) or 0.125 ug CoraLite® Plus 647 Rat IgG2b Isotype Control (LTF-2). Cells were not fixed.