

For Research Use Only

CoraLite® Plus 647 Anti-Mouse CD80 (B7-1) (16-10A1)



Catalog Number:CL647-65076

Basic Information

Catalog Number: CL647-65076	GenBank Accession Number: BC131959	Purification Method: Affinity purification
Size: 100ug, 0.5 mg/ml	GeneID (NCBI): 12519	CloneNo.: 16-10A1
Source: Armenian Hamster	Full Name: CD80 antigen	Excitation/Emission maxima wavelengths: 654 nm / 674 nm
Isotype: IgG		

Applications

Tested Applications:
FC

Species Specificity:
Mouse

Background Information

CD80 (also known as B7-1) is a type I membrane protein that is a member of the immunoglobulin superfamily, with an extracellular immunoglobulin constant-like domain and a variable-like domain required for receptor binding. It is expressed on antigen-presenting cells (APCs), including B cells, dendritic cells, monocytes, and macrophages. CD80 is the receptor for the proteins CD28 and CTLA-4 found on the surface of T-cells. It is involved in the costimulatory signal essential for T-lymphocyte activation. T-cell proliferation and cytokine production is induced by the binding of CD28, binding to CTLA-4 has opposite effects and inhibits T-cell activation. CD80 also acts as a cellular attachment receptor for adenovirus subgroup B. (PMID: 7545666; 12015893; 16920215)

Storage

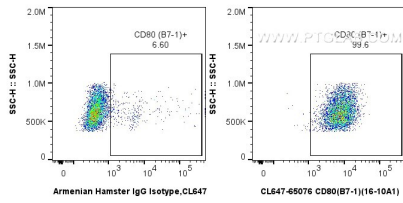
Storage:
Store at 2-8°C. Avoid exposure to light. Stable for one year after shipment.

Storage Buffer:
PBS with 0.1% sodium azide and 0.5% BSA, pH 7.3.

For technical support and original validation data for this product please contact:
T: 1 (888) 4PTGLAB (1-888-478-4522) (toll free in USA), or 1(312) 455-8498 (outside USA) E: proteintech@ptglab.com
W: ptglab.com

This product is exclusively available under Proteintech Group brand and is not available to purchase from any other manufacturer.

Selected Validation Data



1X10⁶ Balb/c mouse peritoneal macrophages were surface stained with 0.5 ug Coralite® Plus 647 Anti-Mouse CD80 (B7-1) (CL647-65076, Clone:16-10A1) or 0.5 ug Coralite® Plus 647 Armenian Hamster IgG Isotype Control (PIP) (CL647-65210, Clone: PIP). Cells were not fixed.