

For Research Use Only

CoraLite® Plus 647 Anti-Mouse CD38 (90)



Catalog Number: CL647-65059

Basic Information

Catalog Number: CL647-65059	GenBank Accession Number: BC046312	Purification Method: Affinity purification
Size: 100ug, 500 µg/ml	GeneID (NCBI): 12494	CloneNo.: 90
Source: Rat	UNIPROT ID: P56528	Recommended Dilutions: IF 1:200-1:800
Isotype: IgG2a, kappa	Full Name: CD38 antigen	Excitation/Emission maxima wavelengths: 654 nm / 674 nm

Applications

Tested Applications: IF, FC	Positive Controls: IF : mouse splenocytes,
Species Specificity: Mouse	

Background Information

CD38, also known as ADP-ribosyl cyclase 1, is a type II transmembrane glycoprotein with a short N-terminal cytoplasmic tail, a single membrane-spanning domain, and a C-terminal extracellular region with four N-glycosylation sites (PMID: 2319135). The extracellular domain of CD38 has bifunctional enzyme activities that catalyze synthesis of cyclic ADP ribose from nicotinamide adenine dinucleotide (NAD) and hydrolysis of cyclic ADP ribose to adenosine diphosphoribose (PMID: 10636863). CD38 is expressed on a variety of hematopoietic and non-hematopoietic cells and is involved in diverse processes such as generation of calcium-mobilizing metabolites, cell activation, and chemotaxis (PMID: 25938500).

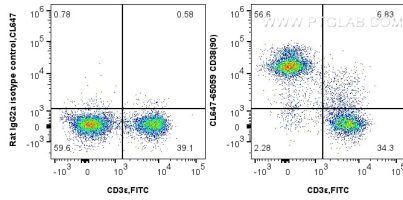
Storage

Storage:
Store at 2-8°C. Avoid exposure to light. Stable for one year after shipment.
Storage Buffer:
PBS with 0.1% sodium azide and 0.5% BSA, pH 7.3.

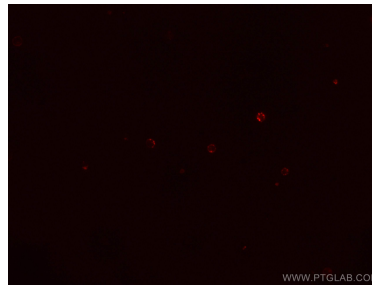
For technical support and original validation data for this product please contact:
T: 1 (888) 4PTGLAB (1-888-478-4522) (toll free in USA), or 1(312) 455-8498 (outside USA) E: proteintech@ptglab.com
W: ptglab.com

This product is exclusively available under Proteintech Group brand and is not available to purchase from any other manufacturer.

Selected Validation Data



1X10⁶ mouse splenocytes were surface stained with 0.2 ug CoraLite® Plus 647 Anti-Mouse CD38 (CL647-65059, Clone:90) or 0.2 ug CoraLite® Plus 647 Rat IgG2a Isotype Control (2A3) (CL647-65209, Clone: 2A3), and 0.2 ug FITC Plus Anti-Mouse CD3e (145-2C11) (FITC-65060, Clone: 145-2C11). Cells were not fixed.



Immunofluorescent analysis of mouse splenocytes using CoraLite® Plus 647-conjugated Anti-Mouse CD38 (CL647-65059, Clone: 90) at dilution of 1:400.