

For Research Use Only

# CoraLite® Plus 647 Anti-Human CD107b / LAMP2 (H4B4)



Catalog Number:CL647-65053

## Basic Information

<b>Catalog Number:</b> CL647-65053	<b>GenBank Accession Number:</b> BC002965	<b>Purification Method:</b> Protein G purification
<b>Size:</b> 100tests , 5 µl/test	<b>GeneID (NCBI):</b> 3920	<b>CloneNo.:</b> H4B4
<b>Source:</b> Mouse	<b>Full Name:</b> lysosomal-associated membrane protein 2	<b>Recommended Dilutions:</b> IF 1:50-1:500
<b>IsoType:</b> IgG1, kappa	<b>Calculated MW:</b> 45 kDa	<b>Excitation/Emission maxima wavelengths:</b> 654 nm / 674 nm

## Applications

<b>Tested Applications:</b> FC (Intra), IF	<b>Positive Controls:</b> IF : HeLa cells,
<b>Species Specificity:</b> Human	

## Background Information

LAMP2 (CD107b) is a Lysosomal membrane glycoprotein. LAMP2 is extensively glycosylated with asparagine-linked oligosaccharides which protect it from intracellular proteolysis (PMID: 10521503). Although LAMP-2 is localized primarily in the endosome-lysosomal membrane of cells, it is also found on the plasma membrane under certain circumstances, e.g., after platelet activation, during granulocytic differentiation and activation, and in some tumor cells (PMID: 12221139). LAMP is involved in lysosomal stability and autophagy (PMID: 12221139). This glycoprotein provides selectins with carbohydrate ligands. LAMP2 may play a role in tumor cell metastasis (PMID 9426697).

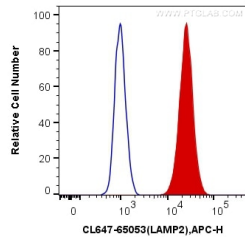
## Storage

**Storage:**  
Store at 2-8°C. Avoid exposure to light. Stable for one year after shipment.  
**Storage Buffer:**  
PBS with 0.1% sodium azide and 0.5% BSA, pH 7.3.

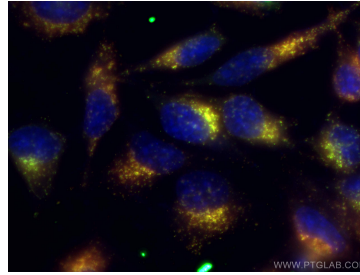
For technical support and original validation data for this product please contact:  
T: 1 (888) 4PTGLAB (1-888-478-4522) (toll free in USA), or 1(312) 455-8498 (outside USA)  
E: proteintech@ptglab.com  
W: ptglab.com

This product is exclusively available under Proteintech Group brand and is not available to purchase from any other manufacturer.

## Selected Validation Data



1X10<sup>6</sup> Jurkat cells were intracellularly stained with 5 ul CoraLite® Plus 647 Anti-Human CD107b (CL647-65053, Clone:H4B4) (red) or Control Antibody. Cells were fixed with 4% PFA and permeabilized with Flow Cytometry Perm Buffer (PF00011-C).



Immunofluorescent analysis of (-20°C Ethanol) fixed HeLa cells using CoraLite® Plus 647-conjugated CD107b antibody (CL647-65053, Clone: H4B4) at dilution of 1:50 and CoraLite®/488-conjugated CD107a antibody (CL488-65051, Clone: H4A3, green) at dilution of 1:50.