

For Research Use Only

CoraLite® Plus 647-conjugated Rabbit IgG control Polyclonal antibody



Catalog Number: CL647-30000

Basic Information

Catalog Number: CL647-30000	GenBank Accession Number: GeneID (NCBI):	Purification Method: N/A
Size: 100ul , Concentration: 1000 µg/ml by Nanodrop;	Full Name:	Excitation/Emission maxima wavelengths: 654 nm / 674 nm
Source: Rabbit		
Isotype: IgG		

Applications

Tested Applications:
FC

Species Specificity:
Rabbit

Background Information

This product is Normal rabbit IgG (without immunized) which purified with Protein A. Normal Rabbit IgG is an isotype control antibody, which is used to estimate the non-specific binding of target primary antibodies due to Fc receptor binding or other protein-protein interactions. An isotype control antibody should have the same immunoglobulin type and be used at the same concentration as the test antibody. This antibody can be used as Rabbit IgG control in experiments.

Storage

Storage:
Store at -20°C. Avoid exposure to light. Stable for one year after shipment.

Storage Buffer:
PBS with 50% Glycerol, 0.05% Proclin300, 0.5% BSA, pH 7.3.

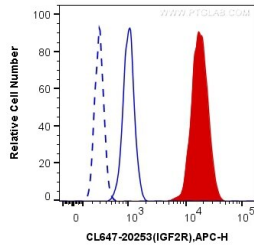
Aliquoting is unnecessary for -20°C storage

***** 20ul sizes contain 0.1% BSA**

For technical support and original validation data for this product please contact:
T: 1 (888) 4PTGLAB (1-888-478-4522) (toll free in USA), or 1(312) 455-8498 (outside USA) E: proteintech@ptglab.com
W: ptglab.com

This product is exclusively available under Proteintech Group brand and is not available to purchase from any other manufacturer.

Selected Validation Data



1X10⁶ HepG2 cells were intracellularly stained with 0.4 ug CoraLite® Plus 647-conjugated Rabbit IgG control (CL647-30000) (blue, solid line) or CoraLite® Plus 647 Anti-IGF2R-Specific (CL647-20253) (red), or not stained (blank) (blue, dashed line). Cells were fixed with 4% PFA and permeabilized with Flow Cytometry Perm Buffer (PF00011-C).