

For Research Use Only

# CoraLite® Plus 647-conjugated MRPL12 Polyclonal antibody

Catalog Number: CL647-14795

Featured Product



## Basic Information

**Catalog Number:**

CL647-14795

**Size:**

100ul , Concentration: 1 mg/mL by Nanodrop;

**Source:**

Rabbit

**Isotype:**

IgG

**Immunogen Catalog Number:**

AG6504

**GenBank Accession Number:**

BC002344

**GeneID (NCBI):**

6182

**UNIPROT ID:**

P52815

**Full Name:**

mitochondrial ribosomal protein L12

**Calculated MW:**

21 kDa

**Observed MW:**

21 kDa

**Purification Method:**

Antigen affinity purification

**Excitation/Emission maxima wavelengths:**

654 nm / 674 nm

## Applications

**Tested Applications:**

FC (Intra)

**Species Specificity:**

human, mouse, rat

## Background Information

Mammalian MRPL12 was the first mitochondrial ribosomal protein to be characterized, and is encoded by a nuclear gene. The protein forms a homodimer, localizes predominantly to mitochondria and binds to the large mitochondrial ribosomal subunit [PMID:862670]. It is required for CycD/Cdk4-induced cell growth. In addition, forming a ribosomal stalk with MRPL7, MRPL12 is required for the recruitment of translation elongation factors Tu and G to the large ribosomal subunit [PMID:12370014]. It also a part of a novel regulatory mechanism that coordinates mitochondrial transcription with translation and/or ribosome biogenesis during human mitochondrial gene expression. The antibody reacts specifically with 21kDa MRPL12 protein.

## Storage

**Storage:**

Store at -20°C. Avoid exposure to light. Stable for one year after shipment.

**Storage Buffer:**

PBS with 50% Glycerol, 0.05% Proclin300, 0.5% BSA, pH 7.3.

Aliquoting is unnecessary for -20°C storage

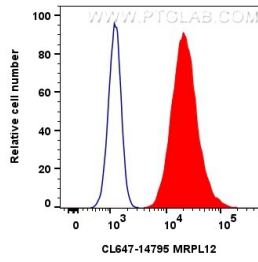
For technical support and original validation data for this product please contact:

T: 1 (888) 4PTGLAB (1-888-478-4522) (toll free in USA), or 1(312) 455-8498 (outside USA)

E: [proteintech@ptglab.com](mailto:proteintech@ptglab.com)  
W: [ptglab.com](http://ptglab.com)

**This product is exclusively available under Proteintech Group brand and is not available to purchase from any other manufacturer.**

## Selected Validation Data



1x10<sup>6</sup> HeLa cells were intracellularly stained with 0.4 ug CoraLite® Plus 647-conjugated MRPL12 Polyclonal antibody (CL647-14795)(red), or 0.4 ug CoraLite® Plus 647-conjugated Rabbit IgG control Rabbit PolyAb (CL647-30000) (blue). Cells were fixed with 4% PFA and permeabilized with Flow Cytometry Perm Buffer (PF00011-C).