

For Research Use Only

CoraLite®594 Anti-Human CD2 (TS1/8)



Catalog Number:CL594-65192

Basic Information

Catalog Number:

CL594-65192

Size:

100tests , 5 µl/test

Source:

Mouse

Isotype:

IgG1, kappa

GenBank Accession Number:

BC033583

GeneID (NCBI):

914

ENSEMBL Gene ID:

ENSG00000116824

UNIPROT ID:

P06729

Full Name:

CD2 molecule

Calculated MW:

351 aa, 39 kDa

Purification Method:

Protein G purification

CloneNo.:

TS1/8

Excitation/Emission maxima wavelengths:

588 nm / 604 nm

Applications

Tested Applications:

FC

Species Specificity:

human

Background Information

CD2 is a cell surface glycoprotein present on a majority of thymocytes, all mature T cells and subset of NK cells but not on B lymphocytes. It is a pan T-cell marker. CD2 interacts with lymphocyte function-associated antigen (LFA-3/CD58) and CD48/BCM1 to mediate adhesion between T-cells and other cell types. CD2 is implicated in the triggering of T-cells, the cytoplasmic domain is implicated in the signaling function.

Storage

Storage:

Store at 2-8°C. Avoid exposure to light.

Storage Buffer:

PBS with 0.1% sodium azide and 0.5% BSA, pH 7.3.

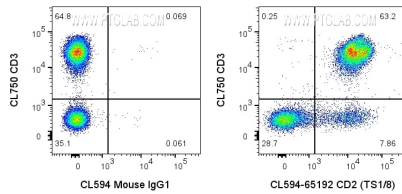
For technical support and original validation data for this product please contact:

T: 1 (888) 4PTGLAB (1-888-478-4522) (toll free in USA), or 1(312) 455-8498 (outside USA)

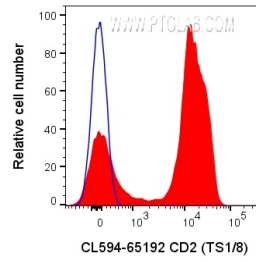
E: proteintech@ptglab.com
W: ptglab.com

This product is exclusively available under Proteintech Group brand and is not available to purchase from any other manufacturer.

Selected Validation Data



1x10⁶ human PBMCs were surface stained with CL750 Anti-Human CD3 and 5 ul CoraLite®594 Anti-Human CD2 (TS1/8) (CL594-65192) or CoraLite®594 Mouse IgG1 Isotype Control. Cells were not fixed. Lymphocytes were gated.



1x10⁶ human PBMCs were surface stained with 5 ul CoraLite®594 Anti-Human CD2 (TS1/8) (CL594-65192) or CoraLite®594 Mouse IgG1 Isotype Control. Cells were not fixed. Lymphocytes were gated.