

For Research Use Only

CoraLite®555-conjugated cyclin B1 Monoclonal antibody



Catalog Number:CL555-67686

Basic Information

Catalog Number: CL555-67686	GenBank Accession Number: BC006510	Purification Method: Protein G purification
Size: 100ul , Concentration: 1000 µg/ml by Nanodrop;	GeneID (NCBI): 891	CloneNo.: 1F3G11
Source: Mouse	UNIPROT ID: P14635	Recommended Dilutions: IF/ICC 1:50-1:500
Isotype: IgG1	Full Name: cyclin B1	Excitation/Emission maxima wavelengths: 557 nm / 570 nm
Immunogen Catalog Number: AG29444	Calculated MW: 48 kDa	
	Observed MW: 55 kDa	

Applications

Tested Applications: IF/ICC, FC (Intra)	Positive Controls: IF/ICC : HeLa cells,
Species Specificity: human, mouse, rat	

Background Information

Cyclin B1 is a regulatory protein involved in mitosis. The gene product complexes with p34(cdc2) to form the maturation-promoting factor (MPF). Two alternative transcripts have been found, a constitutively expressed transcript and a cell cycle-regulated transcript, that is expressed predominantly during G2/M phase of the cell cycle. The different transcripts result from the use of alternate transcription initiation sites. The antibody is specific to CCNB1. We got a 55-60 kDa band in western blotting maybe due to phosphorylation.

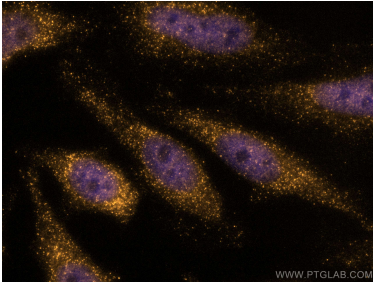
Storage

Storage:
Store at -20°C. Avoid exposure to light. Stable for one year after shipment.
Storage Buffer:
PBS with 50% Glycerol, 0.05% Proclin300, 0.5% BSA, pH 7.3.
Aliquoting is unnecessary for -20°C storage

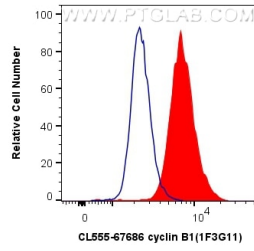
For technical support and original validation data for this product please contact:
T: 1 (888) 4PTGLAB (1-888-478-4522) (toll free in USA), or 1(312) 455-8498 (outside USA)
E: proteintech@ptglab.com
W: ptglab.com

This product is exclusively available under Proteintech Group brand and is not available to purchase from any other manufacturer.

Selected Validation Data



Immunofluorescent analysis of (4% PFA) fixed HeLa cells using CoraLite®555 cyclin B1 antibody (CL555-67686, Clone: 1F3G11) at dilution of 1:200.



1×10^6 HeLa cells were intracellularly stained with 0.4 μ g CoraLite®555 Anti-Human cyclin B1 (CL555-67686, Clone:1F3G11) (red), or 0.4 μ g Control Antibody. Cells were fixed and permeabilized with Transcription Factor Staining Buffer Kit (PF00011).