

For Research Use Only

CoraLite® Plus 488-conjugated CEP63 Monoclonal antibody

Catalog Number:CL488-66996



Basic Information

Catalog Number: CL488-66996	GenBank Accession Number: BC014050	Purification Method: Protein G purification
Size: 100ul , Concentration: 1000 ug/ml by Nanodrop;	GeneID (NCBI): 80254	CloneNo.: 2G12B2
Source: Mouse	UNIPROT ID: Q96MT8	Recommended Dilutions: IF/ICC 1:50-1:500
Isotype: IgG1	Full Name: centrosomal protein 63kDa	Excitation/Emission maxima wavelengths: 493 nm / 522 nm
Immunogen Catalog Number: AG9227	Calculated MW: 703 aa, 81 kDa	
	Observed MW: 85 kDa	

Applications

Tested Applications: IF/ICC	Positive Controls: IF/ICC : hTERT-RPE1 cells,
Species Specificity: Human, Mouse, Rat	

Background Information

CEP63 is required for normal spindle assembly. It maintains centrosome numbers through centrosomal recruitment of CEP152. CEP63 recruits CDK1 to centrosomes. It plays a role in DNA damage response.

Storage

Storage:
Store at -20°C. Avoid exposure to light. Stable for one year after shipment.
Storage Buffer:
PBS with 50% Glycerol, 0.05% Proclin300, 0.5% BSA, pH 7.3.
Aliquoting is unnecessary for -20°C storage

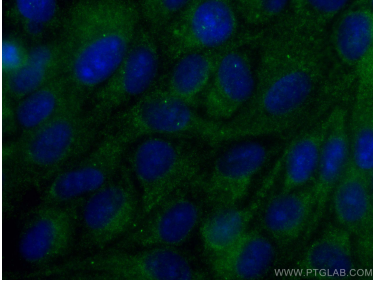
For technical support and original validation data for this product please contact:

T: 1 (888) 4PTGLAB (1-888-478-4522) (toll free
in USA), or 1(312) 455-8498 (outside USA)

E: proteintech@ptglab.com
W: ptglab.com

This product is exclusively available under Proteintech Group brand and is not available to purchase from any other manufacturer.

Selected Validation Data



Immunofluorescent analysis of (-20°C Methanol) fixed hTERT-RPE1 cells using CoraLite® Plus 488 CEP63 antibody (CL488-66996, Clone: 2G12B2) at dilution of 1:200.