

For Research Use Only

CoraLite® Plus 488-conjugated ZP3 Polyclonal antibody

Catalog Number:CL488-21279



Basic Information

Catalog Number: CL488-21279	GenBank Accession Number: BC113949	Purification Method: Antigen affinity purification
Size: 100ul , Concentration: 1000 ug/ml by Nanodrop;	GeneID (NCBI): 7784	Recommended Dilutions: IF-P 1:50-1:500
Source: Rabbit	UNIPROT ID: P21754	Excitation/Emission maxima wavelengths: 493 nm / 522 nm
Isotype: IgG	Full Name: zona pellucida glycoprotein 3 (sperm receptor)	
Immunogen Catalog Number: AG15791	Calculated MW: 373 aa, 41 kDa	
	Observed MW: 47 kDa, 60 kDa	

Applications

Tested Applications: IF-P	Positive Controls: IF-P: mouse ovary tissue,
Species Specificity: human, mouse	

Background Information

Zona pellucida (ZP) is an extracellular matrix that surrounds the oocyte and early embryo, which mediates species-specific sperm binding, induction of the acrosome reaction and prevents post-fertilization polyspermy. Mammalian ZP consists of three to four glycoproteins, called ZP1, ZP2, ZP3, ZP4. ZP3 (zona pellucida glycoprotein 3, also known as zona pellucida sperm-binding protein 3) is essential for sperm binding and zona matrix formation. Human ZP3 gene encodes predicted precursor protein of 47 kDa that are processed into mature glycoprotein with larger apparent molecular mass (PMID: 8588935; 10341000).

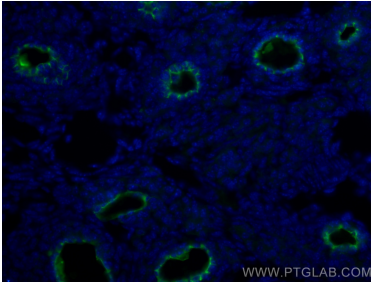
Storage

Storage:
Store at -20°C. Avoid exposure to light. Stable for one year after shipment.
Storage Buffer:
PBS with 50% Glycerol, 0.05% Proclin300, 0.5% BSA, pH 7.3.
Aliquoting is unnecessary for -20°C storage

For technical support and original validation data for this product please contact:
T: 1 (888) 4PTGLAB (1-888-478-4522) (toll free in USA), or 1(312) 455-8498 (outside USA)
E: proteintech@ptglab.com
W: ptglab.com

This product is exclusively available under Proteintech Group brand and is not available to purchase from any other manufacturer.

Selected Validation Data



Immunofluorescent analysis of (4% PFA) fixed mouse ovary tissue using CoraLite® Plus 488 ZP3 antibody (CL488-21279) at dilution of 1:200.