

For Research Use Only

CoraLite® Plus 488-conjugated Glucagon Polyclonal antibody

Catalog Number:CL488-15954



Basic Information

Catalog Number: CL488-15954	GenBank Accession Number: BC005278	Purification Method: Antigen affinity purification
Size: 100ul , Concentration: 1000 ug/ml by Nanodrop;	GeneID (NCBI): 2641	Recommended Dilutions: IF-P 1:50-1:500
Source: Rabbit	UNIPROT ID: P01275	Excitation/Emission maxima wavelengths: 493 nm / 522 nm
Isotype: IgG	Full Name: glucagon	
Immunogen Catalog Number: AG8677	Calculated MW: 180 aa, 21 kDa	

Applications

Tested Applications: IF-P	Positive Controls: IF-P : mouse pancreas tissue,
Species Specificity: human, mouse, rat	

Background Information

Glucagon is a 29-amino acid peptide hormone secreted from the pancreatic alpha cells with a powerful stimulatory effect on hepatic glucose production acting to increase plasma glucose levels. Glucagon is best known as the counter-regulatory hormone to insulin, and normal glucose homeostasis depends largely on the balanced secretion of insulin and glucagon from the pancreatic beta and alpha cells, respectively. The regulation of glucose metabolism by glucagon is mediated by its direct action on the peripheral tissues such as the liver and also by the brain. Glucagon is also released postprandially in a transient manner, which was shown to be involved in inhibition of food intake via reduction of meal size.

Storage

Storage:
Store at -20°C. Avoid exposure to light. Stable for one year after shipment.
Storage Buffer:
PBS with 50% Glycerol, 0.05% Proclin300, 0.5% BSA, pH 7.3.
Aliquoting is unnecessary for -20°C storage

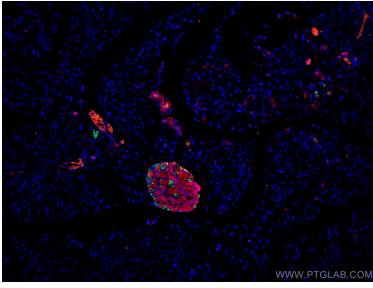
For technical support and original validation data for this product please contact:

T: 1 (888) 4PTGLAB (1-888-478-4522) (toll free
in USA), or 1(312) 455-8498 (outside USA)

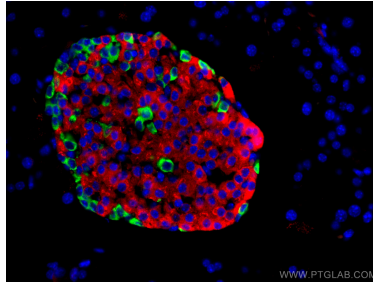
E: proteintech@ptglab.com
W: ptglab.com

This product is exclusively available under Proteintech Group brand and is not available to purchase from any other manufacturer.

Selected Validation Data



Immunofluorescent analysis of (4% PFA) fixed mouse pancreas tissue using CoraLite® Plus 488 Glucagon antibody (CL488-15954) at dilution of 1:200, CoraLite®594 INS antibody (CL594-15848, red).



Immunofluorescent analysis of (4% PFA) fixed mouse pancreas tissue using CoraLite® Plus 488 Glucagon antibody (CL488-15954) at dilution of 1:200, CoraLite®594 INS antibody (CL594-15848, red).