

For Research Use Only

CoraLite® Plus 405 Anti-Human CD68 (KP1)



Catalog Number: CL405-65202

Basic Information

Catalog Number: CL405-65202	GenBank Accession Number: BC015557	Purification Method: Protein G purification
Size: 100tests, 5 µl/test	GeneID (NCBI): 968	CloneNo.: KP1
Source: Mouse	Full Name: CD68 molecule	Excitation/Emission maxima wavelengths: 404 nm / 431 nm
Isotype: Mouse IgG1, kappa	Calculated MW: 37 kDa	

Applications

Tested Applications:
FC (Intra)

Species Specificity:
Human

Background Information

Storage

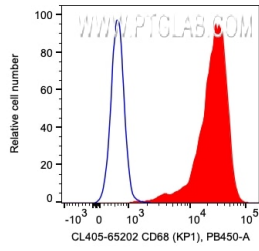
Storage:
Store at 2-8°C. Avoid exposure to light. Stable for one year after shipment.

Storage Buffer:
PBS with 0.09% sodium azide and 0.5% BSA.

For technical support and original validation data for this product please contact:
T: 1 (888) 4PTGLAB (1-888-478-4522) (toll free in USA), or 1(312) 455-8498 (outside USA) E: proteintech@ptglab.com W: ptglab.com

This product is exclusively available under Proteintech Group brand and is not available to purchase from any other manufacturer.

Selected Validation Data



1×10^6 human PBMCs were intracellularly stained with 5 μ l CoraLite® Plus 405 Anti-Human CD68 (CL405-65202, Clone:KP1) or unstained. Cells were fixed with 4% PFA and permeabilized with Flow Cytometry Perm Buffer (PF00011-C). Monocytes were gated.