

For Research Use Only

CoraLite® Plus 405 Anti-Human CD54 (ICAM-1) (15.2)



Catalog Number: **CL405-65075**

Basic Information

Catalog Number: CL405-65075	GenBank Accession Number: BC015969	Purification Method: Affinity purification
Size: 100tests , 5 µl/test	GeneID (NCBI): 3383	CloneNo.: 15.2
Source: Mouse	Full Name: intercellular adhesion molecule 1	Excitation/Emission maxima wavelengths: 404 nm / 431 nm
Isotype: IgG1, kappa	Calculated MW: 90 kDa	

Applications

Tested Applications:
FC

Species Specificity:
Human

Background Information

ICAM-1 (CD54) is a 90-kDa transmembrane glycoprotein of the immunoglobulin superfamily and is critical for the firm attachment and transmigration of leukocytes out of blood vessels and into tissues (PMID: 19307690). ICAM-1 is expressed by several cell types, typically on endothelial cells and cells of the immune system, and its expression can be up-regulated by various stimuli, including TNF- α , INF- γ , IL-1 and thrombin (PMID: 3086451; 9694714; 15979056). It is a ligand for LFA-1 and Mac-1, serves as a receptor for rhinovirus, and is one of several receptors used by Plasmodium falciparum (PMID: 2566624; 2538244; 2475784).

Storage

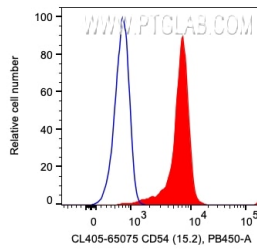
Storage:
Store at 2-8°C. Avoid exposure to light. Stable for one year after shipment.

Storage Buffer:
PBS with 0.09% sodium azide and 0.5% BSA.

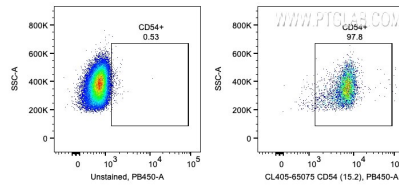
For technical support and original validation data for this product please contact:
T: 1 (888) 4PTGLAB (1-888-478-4522) (toll free in USA), or 1(312) 455-8498 (outside USA) E: proteintech@ptglab.com
W: ptglab.com

This product is exclusively available under Proteintech Group brand and is not available to purchase from any other manufacturer.

Selected Validation Data



1X10⁶ human PBMCs were surface stained with 5 ul CoraLite® Plus 405 Anti-Human CD54 (ICAM-1) (CL405-65075, Clone:15.2), or Mouse IgG1 Isotype Control. Cells were not fixed. Monocytes were gated.



1X10⁶ human PBMCs were surface stained with 5 ul CoraLite® Plus 405 Anti-Human CD54 (ICAM-1) (CL405-65075, Clone:15.2) or Mouse IgG1 Isotype Control. Cells were not fixed. Monocytes were gated.