

For Research Use Only

# GRB10 Recombinant antibody, PBS Only



Catalog Number: 81225-1-PBS

## Basic Information

<b>Catalog Number:</b> 81225-1-PBS	<b>GenBank Accession Number:</b> BC024285	<b>Purification Method:</b> Protein A purification
<b>Size:</b> 100ug , Concentration: 1mg/ml by Nanodrop;	<b>GeneID (NCBI):</b> 2887	<b>CloneNo.:</b> 1D13
<b>Source:</b> Rabbit	<b>UNIPROT ID:</b> Q13322	
<b>Isotype:</b> IgG	<b>Full Name:</b> growth factor receptor-bound protein 10	
<b>Immunogen Catalog Number:</b> AG20355	<b>Calculated MW:</b> 536aa,61 kDa; 594aa,67 kDa	
	<b>Observed MW:</b> 60-70 kDa	

## Applications

**Tested Applications:**  
Indirect ELISA, IF/ICC, WB

**Species Specificity:**  
rat, mouse, human

## Background Information

GRB10 is an adapter protein which modulates coupling of a number of cell surface receptor kinases with specific signaling pathways. GRB10 has three consensus domains including pleckstrin homology (PH) domain, SH2/SH3 domain and Ras-associating domain. By binding to kinases, GRB10 suppresses signals from activated receptors tyrosine kinases, including INSR and IGF1R. It may play a role in mediating ubiquitination of INSR, leading to proteasomal degradation. GRB10 has 4 isoforms with the molecular mass of 60-70 kDa, which are produced by alternative splicing.

## Storage

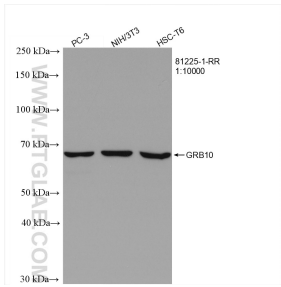
**Storage:**  
Store at -80°C.

**Storage Buffer:**  
PBS Only

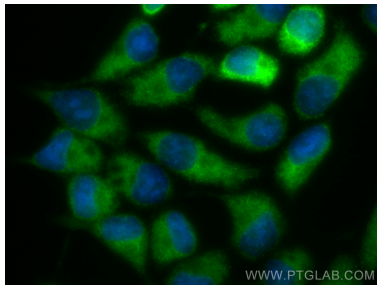
For technical support and original validation data for this product please contact:  
T: 1 (888) 4PTGLAB (1-888-478-4522) (toll free in USA), or 1(312) 455-8498 (outside USA)  
E: [proteintech@ptglab.com](mailto:proteintech@ptglab.com)  
W: [ptglab.com](http://ptglab.com)

This product is exclusively available under Proteintech Group brand and is not available to purchase from any other manufacturer.

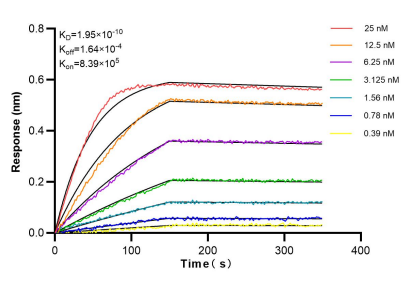
## Selected Validation Data



Various lysates were subjected to SDS PAGE followed by western blot with 81225-1-RR (GRB10 antibody) at dilution of 1:10000 incubated at room temperature for 1.5 hours. This data was developed using the same antibody clone with 81225-1-PBS in a different storage buffer formulation.



Immunofluorescent analysis of (-20°C Methanol) fixed LNCaP cells using GRB10 antibody (81225-1-RR, Clone: 1D13 ) at dilution of 1:1000 and CoraLite®488-Conjugated AffiniPure Goat Anti-Rabbit IgG(H+L). This data was developed using the same antibody clone with 81225-1-PBS in a different storage buffer formulation.



Biolayer interferometry (BLI) kinetic assays of 81225-1-RR against Human GRB10 were performed. The affinity constant is 0.195 nM.