

For Research Use Only

# PAX8 Recombinant antibody

Catalog Number:80756-1-RR



## Basic Information

<b>Catalog Number:</b> 80756-1-RR	<b>GenBank Accession Number:</b> BC001060	<b>Purification Method:</b> Protein A purification
<b>Size:</b> 100ul , Concentration: 1000 ug/ml by Nanodrop;	<b>GeneID (NCBI):</b> 7849	<b>CloneNo.:</b> 6B14
<b>Source:</b> Rabbit	<b>UNIPROT ID:</b> Q06710	<b>Recommended Dilutions:</b> WB 1:5000-1:50000 IHC 1:5000-1:20000 IF/ICC 1:650-1:2600
<b>Isotype:</b> IgG	<b>Full Name:</b> paired box 8	
<b>Immunogen Catalog Number:</b> AG0306	<b>Calculated MW:</b> 48 kDa	
	<b>Observed MW:</b> 48 kDa, 58 kDa	

## Applications

**Tested Applications:**  
WB, IHC, IF/ICC, ELISA

**Species Specificity:**  
human, mouse

**Note-IHC: suggested antigen retrieval with TE buffer pH 9.0; (\*) Alternatively, antigen retrieval may be performed with citrate buffer pH 6.0**

**Positive Controls:**

**WB :** SKOV-3 cells,

**IHC :** human ovary tumor tissue, human ovary cancer tissue, human renal cell carcinoma tissue, human thyroid cancer tissue, mouse kidney tissue

**IF/ICC :** SKOV-3 cells,

## Background Information

PAX8 is a member of the paired box (PAX) family of transcription factors, typically containing a paired box domain and a paired-type homeodomain. It is expressed during organogenesis of the thyroid gland, kidney and Mullerian system. It is thought to regulate the expression of Wilms tumor suppressor (WT1) gene and mutations in PAX8 have been associated with Wilms tumor cells, thyroid and ovarian carcinomas. PAX8 is a useful marker in distinguishing ovarian carcinomas from mammary carcinomas (PMID: 18724243). PAX8 is expressed in a high percentage of ovarian serous, endometrioid, and clear cell carcinomas, but only rarely in primary ovarian mucinous adenocarcinoma.

## Storage

**Storage:**  
Store at -20°C. Stable for one year after shipment.  
**Storage Buffer:**  
PBS with 0.02% sodium azide and 50% glycerol pH 7.3.  
Aliquoting is unnecessary for -20°C storage

\*\*\* 20ul sizes contain 0.1% BSA

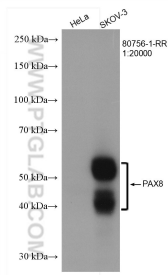
For technical support and original validation data for this product please contact:

T: 1 (888) 4PTGLAB (1-888-478-4522) (toll free in USA), or 1(312) 455-8498 (outside USA)

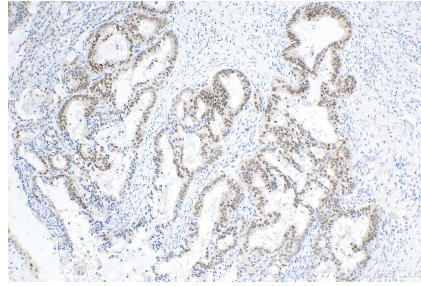
E: proteintech@ptglab.com  
W: ptglab.com

This product is exclusively available under Proteintech Group brand and is not available to purchase from any other manufacturer.

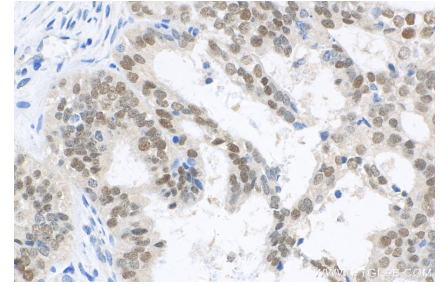
## Selected Validation Data



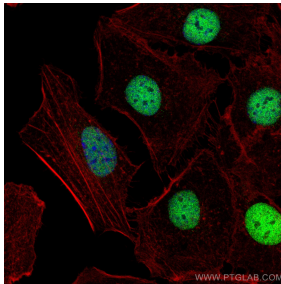
Various lysates were subjected to SDS PAGE followed by western blot with 80756-1-RR (PAX8 antibody) at dilution of 1:20000 incubated at room temperature for 1.5 hours.



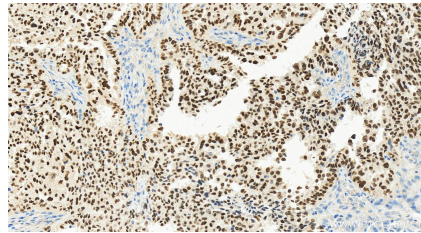
Immunohistochemical analysis of paraffin-embedded human ovary tumor tissue slide using 80756-1-RR (PAX8 antibody) at dilution of 1:8300 (under 10x lens). Heat mediated antigen retrieval with Tris-EDTA buffer (pH 9.0).



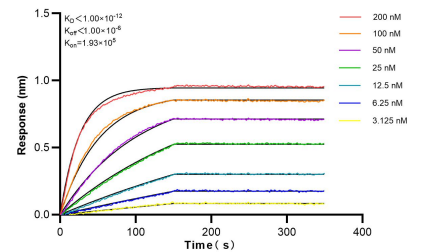
Immunohistochemical analysis of paraffin-embedded human ovary tumor tissue slide using 80756-1-RR (PAX8 antibody) at dilution of 1:8300 (under 40x lens). Heat mediated antigen retrieval with Tris-EDTA buffer (pH 9.0).



Immunofluorescent analysis of (4% PFA) fixed SKOV-3 cells using PAX8 antibody (80756-1-RR, Clone: 6B14) at dilution of 1:1300 and CoraLite®488-Conjugated AffiniPure Goat Anti-Rabbit IgG(H+L), CL594-Phalloidin (red).



Immunohistochemical analysis of paraffin-embedded human ovary cancer tissue slide using 80756-1-RR (PAX8 antibody) at dilution of 1:8000 (under 20x lens). Heat mediated antigen retrieval with Tris-EDTA buffer (pH 9.0).



Bi-layer interferometry (BLI) kinetic assays of 80756-1-RR against Human PAX8 were performed. The affinity constant is below 1 pM.