

For Research Use Only

ALAS2 Monoclonal antibody

Catalog Number: 68332-1-Ig



Basic Information

Catalog Number: 68332-1-Ig	GenBank Accession Number: BC030230	Purification Method: Protein G purification
Size: 150ul , Concentration: 1000 ug/ml by Nanodrop;	GeneID (NCBI): 212	CloneNo.: 2C1H1
Source: Mouse	UNIPROT ID: P22557	Recommended Dilutions: WB 1:5000-1:50000
Isotype: IgG1	Full Name: aminolevulinate, delta-, synthase 2	
Immunogen Catalog Number: AG13524	Calculated MW: 587 aa, 65 kDa	
	Observed MW: 60-65 kDa	

Applications

Tested Applications: WB, ELISA	Positive Controls: WB : THP-1 cells, HEK-293 cells, Daudi cells, NK-92 cells, Raji cells, MOLT-4 cells, K-562 cells
Species Specificity: Human	

Background Information

The heme biosynthetic pathway begins from delta aminolevulinic acid synthase (ALAS) catalyzing the condensation of glycine and succinyl-CoA to delta aminolevulinic acid (ALA) in the mitochondria. ALAS is coded by two genes: ALAS1 and ALAS2. ALAS1 is ubiquitously expressed in all cells, and the negative feedback is regulated by the heme pool; however, ALAS2 is specifically expressed only in erythroid cells.

Storage

Storage:
Store at -20°C. Stable for one year after shipment.
Storage Buffer:
PBS with 0.02% sodium azide and 50% glycerol pH 7.3.
Aliquoting is unnecessary for -20°C storage

*** 20ul sizes contain 0.1% BSA

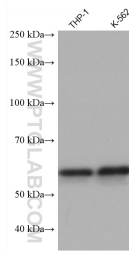
For technical support and original validation data for this product please contact:

T: 1 (888) 4PTGLAB (1-888-478-4522) (toll free in USA), or 1(312) 455-8498 (outside USA)

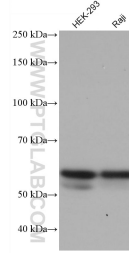
E: proteintech@ptglab.com
W: ptglab.com

This product is exclusively available under Proteintech Group brand and is not available to purchase from any other manufacturer.

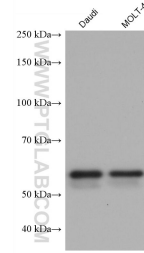
Selected Validation Data



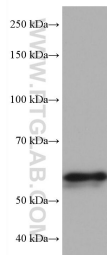
Various lysates were subjected to SDS PAGE followed by western blot with 68332-1-Ig (ALAS2 antibody) at dilution of 1:10000 incubated at room temperature for 1.5 hours.



Various lysates were subjected to SDS PAGE followed by western blot with 68332-1-Ig (ALAS2 antibody) at dilution of 1:10000 incubated at room temperature for 1.5 hours.



Various lysates were subjected to SDS PAGE followed by western blot with 68332-1-Ig (ALAS2 antibody) at dilution of 1:10000 incubated at room temperature for 1.5 hours.



NK-92 cells were subjected to SDS PAGE followed by western blot with 68332-1-Ig (ALAS2 antibody) at dilution of 1:10000 incubated at room temperature for 1.5 hours.