

For Research Use Only

PIN1 Monoclonal antibody

Catalog Number: 68127-1-Ig



Basic Information

Catalog Number: 68127-1-Ig	GenBank Accession Number: BC002899	Purification Method: Protein G purification
Size: 150ul , Concentration: 1000 µg/ml by Nanodrop;	GeneID (NCBI): 5300	CloneNo.: 1F4G3
Source: Mouse	Full Name: peptidylprolyl cis/trans isomerase, NIMA-interacting 1	Recommended Dilutions: WB 1:5000-1:50000 IP 0.5-4.0 ug for IP and 1:1000-1:4000 for WB
Isotype: IgG1	Calculated MW: 18 kDa	IF 1:200-1:800
Immunogen Catalog Number: AG0767	Observed MW: 18 kDa	

Applications

Tested Applications:

IF, IP, WB, ELISA

Species Specificity:

Human, mouse, rat, rabbit, pig

Positive Controls:

WB : HeLa cells, Jurkat cells, K-562 cells, pig brain tissue, rabbit brain tissue, rat brain tissue, mouse brain tissue

IP : HepG2 cells,

IF : NIH/3T3 cells,

Background Information

PIN1 (Peptidyl-prolyl cis-trans isomerase NIMA-interacting 1) is essential for mitosis progression in yeast cells and is hypothesized to perform the same role in mammalian cells. It might regulate cellular processes distinct from the cell cycle itself, such as terminal differentiation through a modulation of differentiation-specific gene expression (PMID:20801874). It colocalizes with NEK6 in the nucleus. Pin1 inhibition simultaneously blocks multiple cancer pathways, disrupts the desmoplastic and immunosuppressive TME, and upregulates PD-L1 and ENT1, rendering pancreatic ductal adenocarcinoma (PDAC) eradicable by immunochemotherapy (PMID: 34388391).

Storage

Storage:

Store at -20°C. Stable for one year after shipment.

Storage Buffer:

PBS with 0.02% sodium azide and 50% glycerol pH 7.3.

Aliquoting is unnecessary for -20°C storage

*** 20ul sizes contain 0.1% BSA

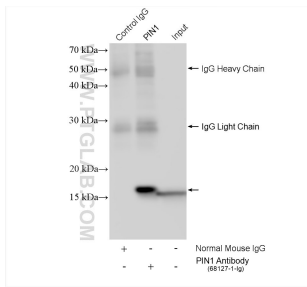
For technical support and original validation data for this product please contact:

T: 1 (888) 4PTGLAB (1-888-478-4522) (toll free in USA), or 1(312) 455-8498 (outside USA)

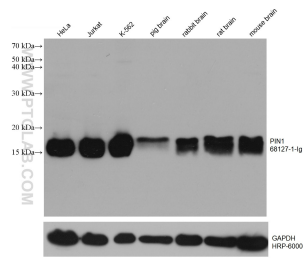
E: proteintech@ptglab.com
W: ptglab.com

This product is exclusively available under Proteintech Group brand and is not available to purchase from any other manufacturer.

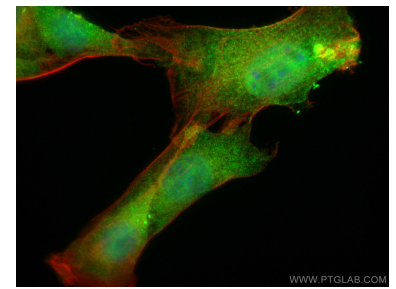
Selected Validation Data



IP result of anti-PIN1(IP:68127-1-Ig, 4ug;
Detection:68127-1-Ig 1:2000) with HepG2 cells
lysate 1920 ug.



Various lysates were subjected to SDS PAGE
followed by western blot with 68127-1-Ig (PIN1
antibody) at dilution of 1:10000 incubated at room
temperature for 1.5 hours. The membrane was
stripped and reblotted with HRP-conjugated GAPDH
Monoclonal antibody (HRP-60004) as loading
control.



Immunofluorescent analysis of (4% PFA) fixed
NIH/3T3 cells using PIN1 antibody (68127-1-Ig,
Clone: 1F4G3) at dilution of 1:400 and
CoraLite@488-Conjugated AffiniPure Goat Anti-
Mouse IgG(H+L), CL594-Phalloidin (red).