

For Research Use Only

DUSP22 Monoclonal antibody

Catalog Number: 68032-1-Ig



Basic Information

| | | |
|---|--|---|
| Catalog Number: 68032-1-Ig | GenBank Accession Number: BC022847 | Purification Method: Protein A purification |
| Size: 150ul , Concentration: 1000 µg/ml by Nanodrop; | GeneID (NCBI): 56940 | CloneNo.: 3B8F1 |
| Source: Mouse | Full Name: dual specificity phosphatase 22 | Recommended Dilutions: WB 1:2000-1:10000 IF 1:400-1:1600 |
| Isotype: IgG2a | Calculated MW: 184 aa, 21 kDa | |
| Immunogen Catalog Number: AG9831 | Observed MW: 21 kDa | |

Applications

| | |
|--|---|
| Tested Applications: IF, WB, ELISA | Positive Controls: |
| Species Specificity: Human, Mouse, Rat, Rabbit | WB : rat brain tissue, rabbit brain tissue, mouse brain tissue IF : NIH/3T3 cells, |

Background Information

DUSP22(Dual specificity protein phosphatase 22) is also named as JSP1, LMWDSP2, MKPX. It has been demonstrated to belong to a new subgroup of small DSPs anchored at the membranes by an N-terminal myristic acid moiety and DUSP22 play a regulatory role in the JNK or p38 MAPK pathways(PMID:17384676). It has 2 isoforms produced by alternative splicing with the molecular weight of 21 kDa and 23 kDa.

Storage

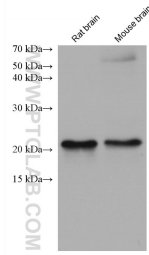
Storage:
Store at -20°C.
Storage Buffer:
PBS with 0.02% sodium azide and 50% glycerol pH 7.3.
Aliquoting is unnecessary for -20°C storage

*** 20ul sizes contain 0.1% BSA

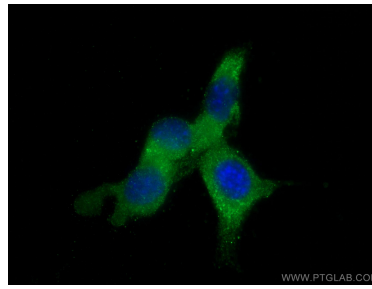
For technical support and original validation data for this product please contact:
T: 1 (888) 4PTGLAB (1-888-478-4522) (toll free in USA), or 1(312) 455-8498 (outside USA)
E: proteintech@ptglab.com
W: ptglab.com

This product is exclusively available under Proteintech Group brand and is not available to purchase from any other manufacturer.

Selected Validation Data



Various lysates were subjected to SDS PAGE followed by western blot with 68032-1-Ig (DUSP22 antibody) at dilution of 1:5000 incubated at room temperature for 1.5 hours.



Immunofluorescent analysis of (-20°C Methanol) fixed NIH/3T3 cells using DUSP22 antibody (68032-1-Ig, Clone: 3B8F1) at dilution of 1:800 and CoraLite®488-Conjugated AffiniPure Goat Anti-Mouse IgG(H+L).