

For Research Use Only

Protein A Monoclonal antibody

Catalog Number: 66945-1-Ig **2 Publications**



Basic Information

Catalog Number: 66945-1-Ig
Size: 150ul, Concentration: 1500 µg/ml by Nanodrop and 1000 µg/ml by Bradford method using BSA as the standard;
Source: Mouse
Isotype: IgG2a

GenBank Accession Number: EU695225
GeneID (NCBI): Full Name:
Purification Method: Protein G purification
CloneNo.: 1G6A6
Recommended Dilutions: WB 1:2000-1:10000

Applications

Tested Applications: WB, ELISA
Cited Applications: IP
Species Specificity: Staphylococcus aureus
Cited Species: human

Positive Controls:
WB : recombinant protein, recombinant protein

Background Information

Protein A is a surface protein of S.aureus which binds IgG molecules by their Fc region (PMID: 4163007). Engineered Protein A has been widely used in antibody purification due to its Fc binding property. However, trace of protein A might be leaked from purification resin thus causes contamination of final products. Antibody against Protein A or ELISA kits for Protein A could be used to evaluate leaking level of Protein A from resin. Protein A should be deactivated (e.g. boiling in 5-10% tween-20) before testing.

Notable Publications

Author	Pubmed ID	Journal	Application
Katsutoshi Yoshizato	35792074	J Biochem	
Qian Wang	17467839	Virus Res	IP

Storage

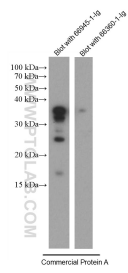
Storage: Store at -20°C. Stable for one year after shipment.
Storage Buffer: PBS with 0.02% sodium azide and 50% glycerol pH 7.3.
Aliquoting is unnecessary for -20°C storage

*** 20ul sizes contain 0.1% BSA

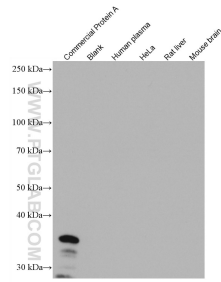
For technical support and original validation data for this product please contact:
T: 1 (888) 4PTGLAB (1-888-478-4522) (toll free in USA), or 1(312) 455-8498 (outside USA)
E: proteintech@ptglab.com
W: ptglab.com

This product is exclusively available under Proteintech Group brand and is not available to purchase from any other manufacturer.

Selected Validation Data



Commercial Protein A was deactivated and lysised followed by SDS-PAGE and then blot with 66945-1-Ig (Protein A antibody) at dilution of 1:10000 and isotype control antibody 66360-1-Ig at 1:2000 incubated at room temperature for 1.5 hours.



Commercial Protein A and negative samples (human plasma, HeLa cells, rat liver, mouse brain) were subjected to SDS-PAGE followed by western blot with 66945-1-Ig (Protein A antibody) at dilution of 1:10000 incubated at room temperature for 1.5 hours.