

For Research Use Only

RDM1 Monoclonal antibody, PBS Only



Catalog Number: 66941-1-PBS

Basic Information

Catalog Number: 66941-1-PBS	GenBank Accession Number: BC038301	Purification Method: Protein A purification
Size: 100ug , Concentration: 1 mg/ml by Nanodrop;	GeneID (NCBI): 201299	CloneNo.: 1C10B4
Source: Mouse	UNIPROT ID: Q8NG50	
Isotype: IgG2a	Full Name: RAD52 motif 1	
Immunogen Catalog Number: AG28686	Calculated MW: 284 aa, 32 kDa	
	Observed MW: 32 kDa	

Applications

Tested Applications:
WB, IF, IHC, Indirect ELISA

Species Specificity:
Human, Mouse, Rat

Background Information

RDM1, also named as RAD52B, encodes a RNA recognition motif (RRM)-containing protein conferred resistance to the antitumor agent cisplatin. The expression of RDM1 is closely related to the cell proliferation and apoptosis of thyroid carcinoma cells and RDM1 may be a potential marker of lung adenocarcinoma. RDM1 has many isoforms (8 kDa, 12-19 kDa and 25-32 kDa) with long or short N-terminus and a great diversity in the exonic composition of C-terminus generated by alternative pre-mRNA splicing and differential usage of two translational start sites. RDM1 protein can be expressed differently in cytoplasm or nuclear/nucleolar in the absence of stress, proteotoxic stress and mild heat shock, suggesting functional differences among the RDM1 proteins. (PMID: 28939762, 17905820, 28939762, 30069034)

Storage

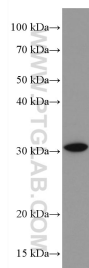
Storage:
Store at -80°C.

Storage Buffer:
PBS Only

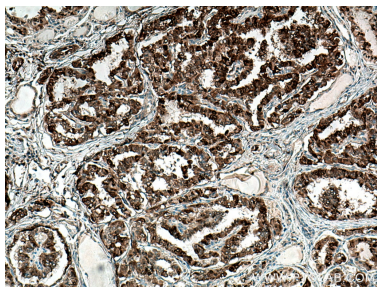
For technical support and original validation data for this product please contact:
T: 1 (888) 4PTGLAB (1-888-478-4522) (toll free in USA), or 1(312) 455-8498 (outside USA)
E: proteintech@ptglab.com
W: ptglab.com

This product is exclusively available under Proteintech Group brand and is not available to purchase from any other manufacturer.

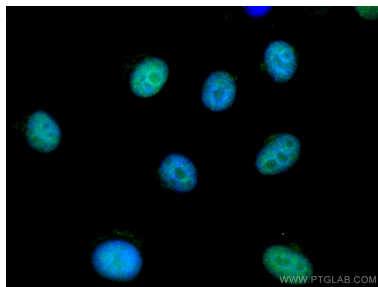
Selected Validation Data



PC-3 cells were subjected to SDS PAGE followed by western blot with 66941-1-Ig (RDM1 antibody) at dilution of 1:3000 incubated at room temperature for 1.5 hours. This data was developed using the same antibody clone with 66941-1-PBS in a different storage buffer formulation.



Immunohistochemical analysis of paraffin-embedded human thyroid cancer tissue slide using 66941-1-Ig (RDM1 antibody) at dilution of 1:300 (under 10x lens). Heat mediated antigen retrieval with Tris-EDTA buffer (pH 9.0). This data was developed using the same antibody clone with 66941-1-PBS in a different storage buffer formulation.



Immunofluorescent analysis of (4% PFA) fixed A549 cells using RDM1 antibody (66941-1-Ig, Clone: 1C10B4) at dilution of 1:400 and CoraLite®488-Conjugated AffiniPure Goat Anti-Mouse IgG(H+L). This data was developed using the same antibody clone with 66941-1-PBS in a different storage buffer formulation.