

For Research Use Only

TSH Beta Monoclonal antibody

Catalog Number: 66750-1-Ig **1 Publications**



Basic Information

Catalog Number: 66750-1-Ig	GenBank Accession Number: BC069298	Purification Method: Protein A purification
Size: 150ul , Concentration: 1300 ug/ml by Nanodrop and 1000 ug/ml by Bradford method using BSA as the standard;	GeneID (NCBI): 7252	CloneNo.: 2G1H3
Source: Mouse	UNIPROT ID: P01222	Recommended Dilutions: IHC 1:3000-1:12000 IF-P 1:200-1:800
Isotype: IgG2b	Full Name: thyroid stimulating hormone, beta	
Immunogen Catalog Number: AG27153	Calculated MW: 138 aa, 16 kDa	

Applications

Tested Applications: IHC, IF-P, ELISA	Positive Controls: IHC : human pituitary tissue, IF-P : human pituitary tissue,
Cited Applications: IHC, IF	
Species Specificity: Human	
Cited Species: human	
Note-IHC: suggested antigen retrieval with TE buffer pH 9.0; (*) Alternatively, antigen retrieval may be performed with citrate buffer pH 6.0	

Notable Publications

Author	Pubmed ID	Journal	Application
Sisi Zeng	39285586	Cancer Commun (Lond)	IHC,IF

Storage

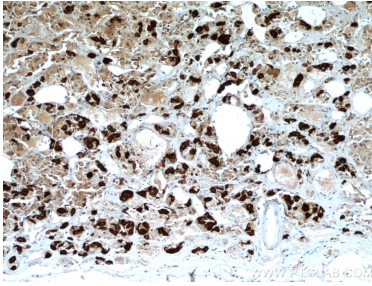
Storage:
Store at -20°C. Stable for one year after shipment.
Storage Buffer:
PBS with 0.02% sodium azide and 50% glycerol pH 7.3.
Aliquoting is unnecessary for -20°C storage

*** 20ul sizes contain 0.1% BSA

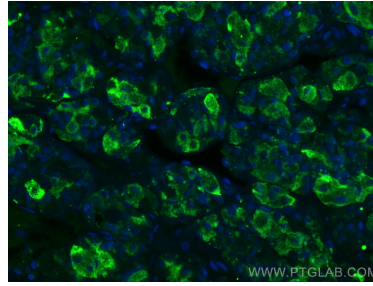
For technical support and original validation data for this product please contact:
T: 1 (888) 4PTGLAB (1-888-478-4522) (toll free in USA), or 1(312) 455-8498 (outside USA)
E: proteintech@ptglab.com
W: ptglab.com

This product is exclusively available under Proteintech Group brand and is not available to purchase from any other manufacturer.

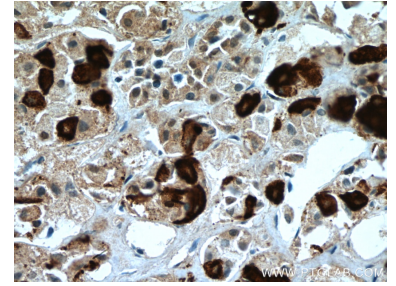
Selected Validation Data



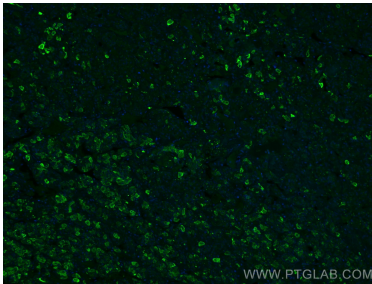
Immunohistochemical analysis of paraffin-embedded human pituitary tissue slide using 66750-1-Ig (TSH beta antibody) at dilution of 1:6000 (under 10x lens. Heat mediated antigen retrieval with Tris-EDTA buffer (pH 9.0).



Immunofluorescent analysis of (4% PFA) fixed human pituitary tissue using TSH Beta antibody (66750-1-Ig, Clone: 2G1H3) at dilution of 1:400 and CoraLite®488-Conjugated Goat Anti-Mouse IgG(H+L).



Immunohistochemical analysis of paraffin-embedded human pituitary tissue slide using 66750-1-Ig (TSH beta antibody) at dilution of 1:6000 (under 40x lens. Heat mediated antigen retrieval with Tris-EDTA buffer (pH 9.0).



Immunofluorescent analysis of (4% PFA) fixed human pituitary tissue using TSH Beta antibody (66750-1-Ig, Clone: 2G1H3) at dilution of 1:400 and CoraLite®488-Conjugated Goat Anti-Mouse IgG(H+L).