

For Research Use Only

KIDINS220 Monoclonal antibody

Catalog Number:66748-1-Ig



Basic Information

Catalog Number: 66748-1-Ig	GenBank Accession Number: BC130610	Purification Method: Protein A purification
Size: 150ul , Concentration: 1600 ug/ml by Nanodrop and 1000 ug/ml by Bradford method using BSA as the standard;	GeneID (NCBI): 57498	CloneNo.: 3G2D8
Source: Mouse	UNIPROT ID: Q9ULHO	Recommended Dilutions: WB 1:1000-1:6000
Isotype: IgG2b	Full Name: kinase D-interacting substrate, 220kDa	
Immunogen Catalog Number: AG17624	Calculated MW: 1672 aa, 187 kDa	
	Observed MW: 200 kDa	

Applications

Tested Applications: WB, ELISA	Positive Controls: WB : HEK-293 cells, Jurkat cells
Species Specificity: Human	

Background Information

Kidins220 (Kinase D-interacting substrate 220 kD) is a crucial mediator of signal transduction in neural tissues. Also it named ARMS(Ankyrin Repeat-Rich Membrane Spanning) due to the presence of ankyrin repeats and transmembrane domains together with other binding motifs. It is a multidomain transmembrane protein that not only transduces signaling mediated by the receptor tyrosine kinase (RTK), but also regulates the stability of cytoskeletal network through a number of cytoskeleton-associated proteins, including Septin5, MAPs , and stathmin family members. KIDINS220 exists some isoforms with MV 194 kDa, 185 kDa, 115 kDa, and 60 kDa.

Storage

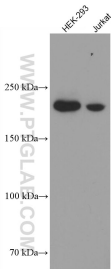
Storage:
Store at -20°C. Stable for one year after shipment.
Storage Buffer:
PBS with 0.02% sodium azide and 50% glycerol pH 7.3.
Aliquoting is unnecessary for -20°C storage

*** 20ul sizes contain 0.1% BSA

For technical support and original validation data for this product please contact:
T: 1 (888) 4PTGLAB (1-888-478-4522) (toll free in USA), or 1(312) 455-8498 (outside USA)
E: proteintech@ptglab.com
W: ptglab.com

This product is exclusively available under Proteintech Group brand and is not available to purchase from any other manufacturer.

Selected Validation Data



Various lysates were subjected to SDS PAGE followed by western blot with 66748-1-Ig (KIDINS220 antibody) at dilution of 1:3000 incubated at room temperature for 1.5 hours.