

For Research Use Only

ASGR1 Monoclonal antibody

Catalog Number: 66692-1-Ig

Featured Product

1 Publications



Basic Information

Catalog Number: 66692-1-Ig	GenBank Accession Number: BC032130	Purification Method: Protein G purification
Size: 150ul, Concentration: 1000 µg/ml by Nanodrop;	GeneID (NCBI): 432	CloneNo.: 1G5F5
Source: Mouse	UNIPROT ID: P07306	Recommended Dilutions: WB 1:2000-1:10000 IHC 1:500-1:2000
Isotype: IgG1	Full Name: asialoglycoprotein receptor 1	
Immunogen Catalog Number: AG2310	Calculated MW: 291 aa, 33 kDa	
	Observed MW: 42-46 kDa	

Applications

Tested Applications:

WB, IHC, ELISA

Cited Applications:

WB, Blocking assay

Species Specificity:

human, mouse, rat, pig

Cited Species:

human

Note-IHC: suggested antigen retrieval with TE buffer pH 9.0; (*) Alternatively, antigen retrieval may be performed with citrate buffer pH 6.0

Positive Controls:

WB : HuH-7 cells, L02 cells, HepG2 cells, pig liver tissue, mouse hepatocytes, HSC-T6 cells

IHC : human liver tissue,

Background Information

Asialoglycoprotein receptor (ASGPR), also known as the hepatic galactose/N-acetylglucosamine (GlcNAc) receptor or Ashwell receptor, is a C-type lectin expressed exclusively in hepatic parenchymal cells. ASGPR consists of two subunits, a major subunit (ASGR1, HL-1) and a minor subunit (ASGR2, HL-2), and specifically recognizes terminal β -linked galactose or GlcNAc on circulating glycoproteins or cells. This receptor plays a critical role in serum glycoprotein homeostasis by mediating the endocytosis and lysosomal degradation of glycoproteins that contain terminal galactose or GlcNAc residues. ASGPR may facilitate hepatic infection by multiple viruses including hepatitis B, and is also a target for liver-specific drug delivery.

Notable Publications

Author	Pubmed ID	Journal	Application
Chaitanya Gandikota	38572923	J Med Virol	WB, Blocking assay

Storage

Storage:

Store at -20°C. Stable for one year after shipment.

Storage Buffer:

PBS with 0.02% sodium azide and 50% glycerol pH 7.3.

Aliquoting is unnecessary for -20°C storage

*** 20ul sizes contain 0.1% BSA

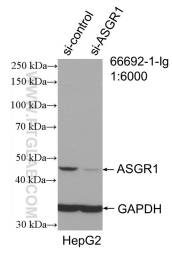
For technical support and original validation data for this product please contact:

T: 1 (888) 4PTGLAB (1-888-478-4522) (toll free in USA), or 1(312) 455-8498 (outside USA)

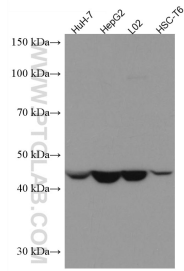
E: proteintech@ptglab.com
W: ptglab.com

This product is exclusively available under Proteintech Group brand and is not available to purchase from any other manufacturer.

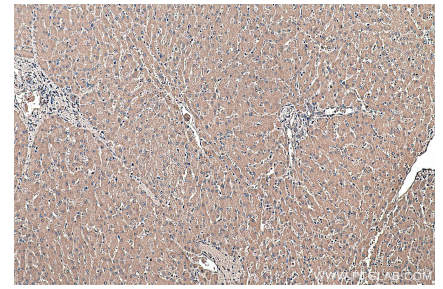
Selected Validation Data



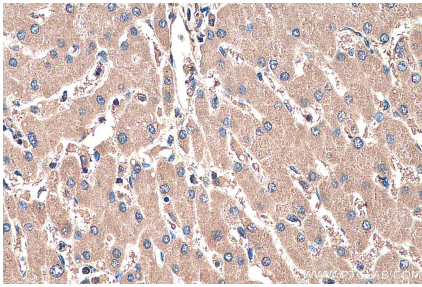
WB result of ASGR1 antibody (66692-1-Ig; 1:6000; incubated at room temperature for 1.5 hours) with sh-Control and sh-ASGR1 transfected HepG2 cells.



Various lysates were subjected to SDS PAGE followed by western blot with 66692-1-Ig (ASGR1 antibody) at dilution of 1:5000 incubated at room temperature for 1.5 hours.



Immunohistochemical analysis of paraffin-embedded human liver tissue slide using 66692-1-Ig (ASGR1 antibody) at dilution of 1:1000 (under 10x lens). Heat mediated antigen retrieval with Tris-EDTA buffer (pH 9.0).



Immunohistochemical analysis of paraffin-embedded human liver tissue slide using 66692-1-Ig (ASGR1 antibody) at dilution of 1:1000 (under 40x lens). Heat mediated antigen retrieval with Tris-EDTA buffer (pH 9.0).