

For Research Use Only

Cytokeratin 6A Monoclonal antibody

Catalog Number: 66685-1-Ig **2 Publications**



Basic Information

Catalog Number: 66685-1-Ig	GenBank Accession Number: BC008807	Purification Method: Protein A purification
Size: 150ul , Concentration: 1100 ug/ml by Nanodrop and 1000 ug/ml by Bradford method using BSA as the standard;	GeneID (NCBI): 3853	CloneNo.: 2H6A11
Source: Mouse	UNIPROT ID: P02538	Recommended Dilutions: WB 1:20000-1:100000 IHC 1:1000-1:4000
Isotype: IgG1	Full Name: keratin 6A	
Immunogen Catalog Number: AG0882	Calculated MW: 60 kDa	
	Observed MW: 60 kDa	

Applications

Tested Applications: WB, IHC, ELISA	Positive Controls: WB : A431 cells, IHC : human cervical cancer tissue,
Cited Applications: IHC, IF	
Species Specificity: human	
Cited Species: human, mouse	
Note-IHC: suggested antigen retrieval with TE buffer pH 9.0; (*) Alternatively, antigen retrieval may be performed with citrate buffer pH 6.0	

Background Information

Keratins are a large family of proteins that form the intermediate filament cytoskeleton of epithelial cells, which are classified into two major sequence types. Type I keratins are a group of acidic intermediate filament proteins, including K9-K23, and the hair keratins Ha1-Ha8. Type II keratins are the basic or neutral counterparts to the acidic type I keratins, including K1-K8, and the hair keratins, Hb1-Hb6. Keratin 6 is a type II keratin. It is used as marker for epidermal hyperproliferation and differentiation. There are three keratin 6 isoforms: keratin 6A, 6B and 6C. They share more than 99% identical DNA sequence.

Notable Publications

Author	Pubmed ID	Journal	Application
Junfeng Zhang	33221741	Aging (Albany NY)	IF,IHC
Zhenkun Zhang	33159581	Cell Tissue Res	IF

Storage

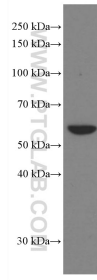
Storage:
Store at -20°C. Stable for one year after shipment.
Storage Buffer:
PBS with 0.02% sodium azide and 50% glycerol pH 7.3.
Aliquoting is unnecessary for -20°C storage

*** 20ul sizes contain 0.1% BSA

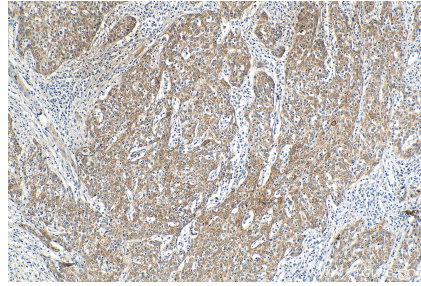
For technical support and original validation data for this product please contact:
T: 1 (888) 4PTGLAB (1-888-478-4522) (toll free in USA), or 1(312) 455-8498 (outside USA)
E: proteintech@ptglab.com
W: ptglab.com

This product is exclusively available under Proteintech Group brand and is not available to purchase from any other manufacturer.

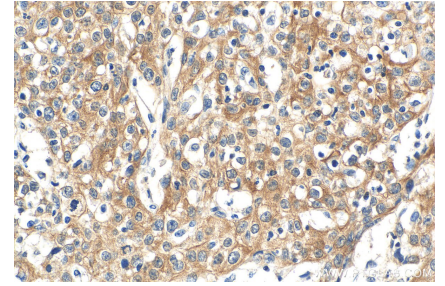
Selected Validation Data



A431 cells were subjected to SDS PAGE followed by western blot with 66685-1-Ig (KRT6A antibody) at dilution of 1:100000 incubated at room temperature for 1.5 hours.



Immunohistochemical analysis of paraffin-embedded human cervical cancer tissue slide using 66685-1-Ig (Cytokeratin 6A antibody) at dilution of 1:2000 (under 10x lens). Heat mediated antigen retrieval with Tris-EDTA buffer (pH 9.0).



Immunohistochemical analysis of paraffin-embedded human cervical cancer tissue slide using 66685-1-Ig (Cytokeratin 6A antibody) at dilution of 1:2000 (under 40x lens). Heat mediated antigen retrieval with Tris-EDTA buffer (pH 9.0).