

For Research Use Only

ETV5 Monoclonal antibody

Catalog Number: 66657-1-Ig **3 Publications**



Basic Information

Catalog Number: 66657-1-Ig	GenBank Accession Number: BC007333	Purification Method: Protein A purification
Size: 150ul , Concentration: 1500 µg/ml by Nanodrop and 1000 µg/ml by Bradford method using BSA as the standard;	GeneID (NCBI): 2119	CloneNo.: 2A4A4
Source: Mouse	UNIPROT ID: P41161	Recommended Dilutions: WB 1:500-1:2000
Isotype: IgG2a	Full Name: ets variant 5	
Immunogen Catalog Number: AG3708	Calculated MW: 510 aa, 58 kDa	
	Observed MW: 58-60 kDa	

Applications

Tested Applications: WB, ELISA	Positive Controls: WB : T-47D cells, HeLa cells, PC-3 cells, DU 145 cells, LNCaP cells
Cited Applications: ChIP	
Species Specificity: Human	
Cited Species: human, mouse	

Background Information

ETS variant gene 5(ETV5) belongs to the ETS oncogene family that shares a conserved peptide, ETS domain, which mediates sequence-specific DNA binding. ETV5 is a transcription factor and is required for spermatogonial stem cell self-renewal. ETV5 can be negatively regulated by COP1, a tumor suppressor. Also it has a role in branching morphogenesis in the developing kidney

Notable Publications

Author	Pubmed ID	Journal	Application
Ankur Garg	30188892	PLoS Genet	ChIP
Ankur Garg	32043969	Elife	ChIP
Yinping Liu	36517864	J Ovarian Res	ChIP

Storage

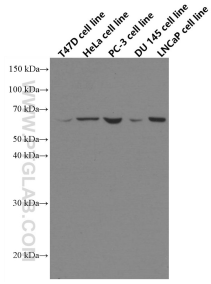
Storage:
Store at -20°C. Stable for one year after shipment.
Storage Buffer:
PBS with 0.02% sodium azide and 50% glycerol pH 7.3.
Aliquoting is unnecessary for -20°C storage

*** 20ul sizes contain 0.1% BSA

For technical support and original validation data for this product please contact:
T: 1 (888) 4PTGLAB (1-888-478-4522) (toll free in USA), or 1(312) 455-8498 (outside USA)
E: proteintech@ptglab.com
W: ptglab.com

This product is exclusively available under Proteintech Group brand and is not available to purchase from any other manufacturer.

Selected Validation Data



Various lysates were subjected to SDS PAGE followed by western blot with 66657-1-Ig (ETV5 antibody) at dilution of 1:2000 incubated at room temperature for 1.5 hours.