

For Research Use Only

WBP2 Monoclonal antibody

Catalog Number: 66585-1-Ig

Featured Product

1 Publications



Basic Information

Catalog Number: 66585-1-Ig	GenBank Accession Number: BC010616	Purification Method: Protein G purification
Size: 150ul, Concentration: 1900 ug/ml by Nanodrop and 1000 ug/ml by Bradford method using BSA as the standard;	GeneID (NCBI): 23558	CloneNo.: 2B4G7
Source: Mouse	UNIPROT ID: Q969T9	Recommended Dilutions: WB 1:2000-1:10000 IHC 1:250-1:1000 IF/ICC 1:400-1:1600
Isotype: IgG1	Full Name: WW domain binding protein 2	
Immunogen Catalog Number: AG2661	Calculated MW: 261 aa, 28 kDa	
	Observed MW: 30-40 kDa	

Applications

Tested Applications:
WB, IHC, IF/ICC, ELISA

Cited Applications:
IF

Species Specificity:
Human, mouse

Cited Species:
human

Note-IHC: suggested antigen retrieval with TE buffer pH 9.0; (*) Alternatively, antigen retrieval may be performed with citrate buffer pH 6.0

Positive Controls:

WB: HeLa cells, HEK-293 cells, NIH/3T3 cells, MCF-7 cells, Jurkat cells

IHC: mouse testis tissue,

IF/ICC: HeLa cells,

Notable Publications

Author	Pubmed ID	Journal	Application
Zhe Zheng	33658485	Cell Death Dis	IF

Storage

Storage:

Store at -20°C. Stable for one year after shipment.

Storage Buffer:

PBS with 0.02% sodium azide and 50% glycerol pH 7.3.

Aliquoting is unnecessary for -20°C storage

*** 20ul sizes contain 0.1% BSA

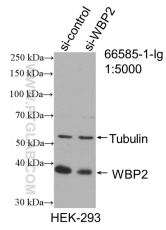
For technical support and original validation data for this product please contact:

T: 1 (888) 4PTGLAB (1-888-478-4522) (toll free in USA), or 1(312) 455-8498 (outside USA)

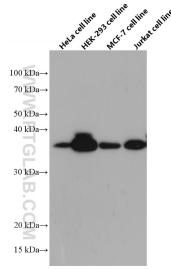
E: proteintech@ptglab.com
W: ptglab.com

This product is exclusively available under Proteintech Group brand and is not available to purchase from any other manufacturer.

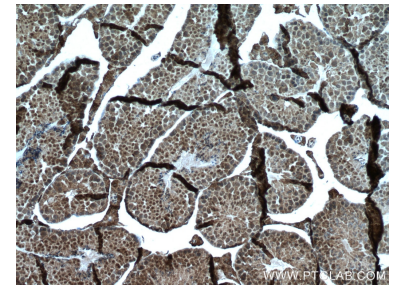
Selected Validation Data



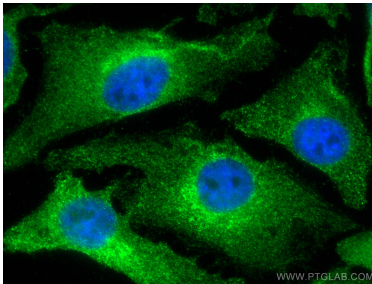
WB result of WBP2 antibody (66585-1-Ig; 1:5000; incubated at room temperature for 1.5 hours) with sh-Control and sh-WBP2 transfected HEK-293 cells.



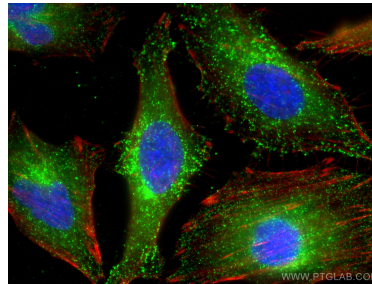
HeLa cells were subjected to SDS PAGE followed by western blot with 66585-1-Ig (WBP2 antibody) at dilution of 1:5000 incubated at room temperature for 1.5 hours.



Immunohistochemical analysis of paraffin-embedded mouse testis tissue slide using 66585-1-Ig (WBP2 antibody) at dilution of 1:500 (under 10x lens). Heat mediated antigen retrieval with Tris-EDTA buffer (pH 9.0).



Immunofluorescent analysis of (4% PFA) fixed HeLa cells using WBP2 antibody (66585-1-Ig, Clone: 2B4G7) at dilution of 1:800 and CoraLite@488-Conjugated AffiniPure Goat Anti-Mouse IgG(H+L).



Immunofluorescent analysis of (-20°C Ethanol) fixed HeLa cells using WBP2 antibody (66585-1-Ig, Clone: 2B4G7) at dilution of 1:800 and CoraLite@488-Conjugated AffiniPure Goat Anti-Mouse IgG(H+L), CL594-Phalloidin (red).