

For Research Use Only

SLC9A9 Monoclonal antibody

Catalog Number: 66577-1-Ig **1 Publications**



Basic Information

Catalog Number: 66577-1-Ig	GenBank Accession Number: BC035779	Purification Method: Protein A purification
Size: 150ul , Concentration: 2500 µg/ml by Nanodrop and 1000 µg/ml by Bradford method using BSA as the standard;	GeneID (NCBI): 285195	CloneNo.: 1B8D9
Source: Mouse	UNIPROT ID: Q8IVB4	Recommended Dilutions: WB 1:2000-1:10000 IHC 1:250-1:1000 IF/ICC 1:400-1:1600
Isotype: IgG2a	Full Name: solute carrier family 9 (sodium/hydrogen exchanger), member 9	
Immunogen Catalog Number: AG4660	Calculated MW: 645 aa, 73 kDa	
	Observed MW: 73 kDa	

Applications

Tested Applications: WB, IHC, IF/ICC, ELISA	Positive Controls: WB : HeLa cells, HEK-293 cells, MCF-7 cells, HepG2 cells, HSC-T6 cells, NIH/3T3 cells, RAW 264.7 cells IHC : human kidney tissue, human tonsillitis tissue, human liver cancer tissue IF/ICC : HepG2 cells,
Cited Applications: WB, IHC	
Species Specificity: Human, Mouse, Rat	
Cited Species: human	
Note-IHC: suggested antigen retrieval with TE buffer pH 9.0; (*) Alternatively, antigen retrieval may be performed with citrate buffer pH 6.0	

Notable Publications

Author	Pubmed ID	Journal	Application
Deng Guang	38824966	Biochem Pharmacol	WB,IHC

Storage

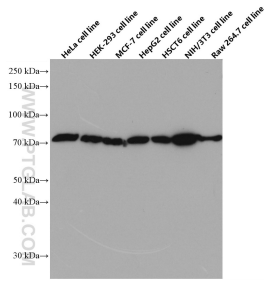
Storage:
Store at -20°C. Stable for one year after shipment.
Storage Buffer:
PBS with 0.02% sodium azide and 50% glycerol pH 7.3.
Aliquoting is unnecessary for -20°C storage

*** 20ul sizes contain 0.1% BSA

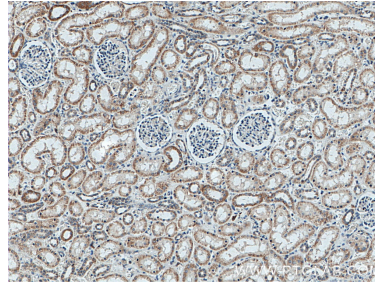
For technical support and original validation data for this product please contact:
T: 1 (888) 4PTGLAB (1-888-478-4522) (toll free in USA), or 1(312) 455-8498 (outside USA)
E: proteintech@ptglab.com
W: ptglab.com

This product is exclusively available under Proteintech Group brand and is not available to purchase from any other manufacturer.

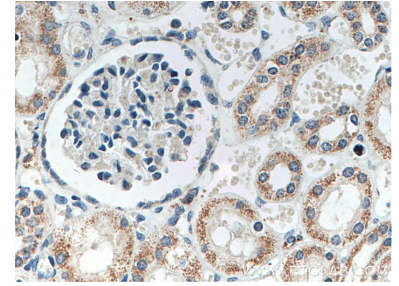
Selected Validation Data



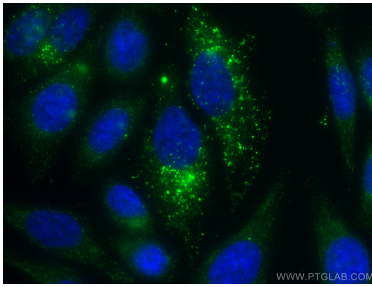
Various lysates were subjected to SDS PAGE followed by western blot with 66577-1-Ig (SLC9A9 antibody) at dilution of 1:5000 incubated at room temperature for 1.5 hours.



Immunohistochemical analysis of paraffin-embedded human kidney tissue slide using 66577-1-Ig (SLC9A9 antibody) at dilution of 1:500 (under 10x lens). Heat mediated antigen retrieval with Tris-EDTA buffer (pH 9.0).



Immunohistochemical analysis of paraffin-embedded human kidney tissue slide using 66577-1-Ig (SLC9A9 antibody) at dilution of 1:500 (under 40x lens). Heat mediated antigen retrieval with Tris-EDTA buffer (pH 9.0).



Immunofluorescent analysis of (-20°C Ethanol) fixed HepG2 cells using SLC9A9 antibody (66577-1-Ig, Clone: 1B8D9) at dilution of 1:800 and CoraLite®488-Conjugated Goat Anti-Mouse IgG(H+L).