

For Research Use Only

# HuR/ELAVL1 Monoclonal antibody

Catalog Number: 66549-1-Ig

Featured Product

7 Publications



## Basic Information

<b>Catalog Number:</b> 66549-1-Ig	<b>GenBank Accession Number:</b> BC003376	<b>Purification Method:</b> Protein A purification
<b>Size:</b> 150ul, Concentration: 2300 µg/ml by Nanodrop and 1000 µg/ml by Bradford method using BSA as the standard;	<b>GeneID (NCBI):</b> 1994	<b>CloneNo.:</b> 1A11H2
<b>Source:</b> Mouse	<b>UNIPROT ID:</b> Q15717	<b>Recommended Dilutions:</b> WB 1:5000-1:50000 IHC 1:500-1:2000 IF/ICC 1:200-1:800
<b>Isotype:</b> IgG2a	<b>Full Name:</b> ELAV (embryonic lethal, abnormal vision, Drosophila)-like 1 (Hu antigen R)	
<b>Immunogen Catalog Number:</b> AG2249	<b>Calculated MW:</b> 326 aa, 36 kDa	
	<b>Observed MW:</b> 34-37 kDa	

## Applications

**Tested Applications:**  
WB, IHC, IF/ICC, ELISA

**Cited Applications:**  
WB, IF

**Species Specificity:**  
Human, mouse, rat

**Cited Species:**  
human, mouse

**Note-IHC: suggested antigen retrieval with TE buffer pH 9.0; (\*) Alternatively, antigen retrieval may be performed with citrate buffer pH 6.0**

**Positive Controls:**

**WB:** HeLa cells, HEK-293 cells, A549 cells, MCF-7 cells, Jurkat cells, HSC-T6 cells, PC-12 cells, NIH/3T3 cells, Neuro-2a cells, RAW 264.7 cells, NCI-H1299 cells

**IHC:** human ovary tumor tissue, human breast cancer tissue

**IF/ICC:** HepG2 cells,

## Background Information

ELAVL1, also named as HUR, belongs to the RRM elav family. It is involved in 3'-UTR ARE-mediated MYC stabilization. ELAVL1 binds avidly to the AU-rich element in FOS and IL3/interleukin-3 mRNAs. In the case of the FOS AU-rich element, ELAVL1 binds to a core element of 27 nucleotides that contain AUUUUA, AUUUUA and AUUUUUUA motifs.

## Notable Publications

Author	Pubmed ID	Journal	Application
Aydan Torun	31487531	Cell Signal	WB
Yuanfei Ren	35051552	Mol Cell Endocrinol	WB,IF
Wei Xu	35466755	J Int Med Res	WB

## Storage

**Storage:**

Store at -20°C. Stable for one year after shipment.

**Storage Buffer:**

PBS with 0.02% sodium azide and 50% glycerol pH 7.3.

Aliquoting is unnecessary for -20°C storage

\*\*\* 20ul sizes contain 0.1% BSA

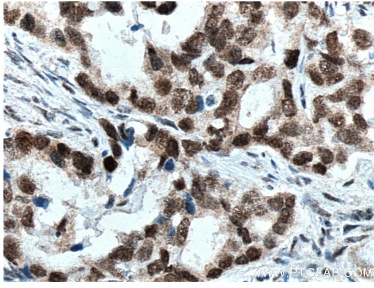
For technical support and original validation data for this product please contact:

T: 1 (888) 4PTGLAB (1-888-478-4522) (toll free in USA), or 1(312) 455-8498 (outside USA)

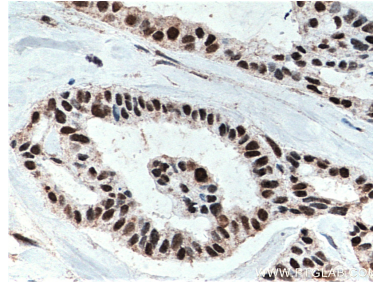
E: proteintech@ptglab.com  
W: ptglab.com

This product is exclusively available under Proteintech Group brand and is not available to purchase from any other manufacturer.

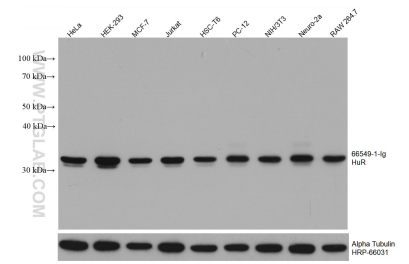
## Selected Validation Data



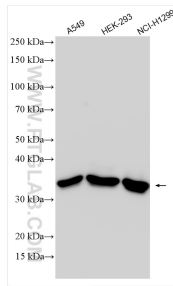
Immunohistochemical analysis of paraffin-embedded human ovary tumor tissue slide using 66549-1-Ig (HuR antibody) at dilution of 1:1000 (under 40x lens. Heat mediated antigen retrieval with Tris-EDTA buffer (pH 9.0)).



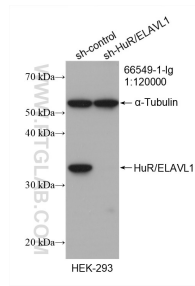
Immunohistochemical analysis of paraffin-embedded human breast cancer tissue slide using 66549-1-Ig (HuR antibody) at dilution of 1:1000 (under 40x lens. Heat mediated antigen retrieval with Tris-EDTA buffer (pH 9.0)).



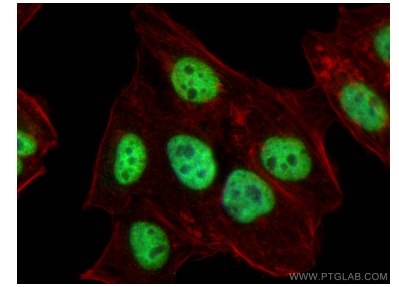
Various lysates were subjected to SDS PAGE followed by western blot with 66549-1-Ig (HuR/ELAVL1 antibody) at dilution of 1:20000 incubated at room temperature for 1.5 hours. The membrane was stripped and reblotted with HRP-conjugated Alpha Tubulin Monoclonal antibody (HRP-66031) as loading control.



Various lysates were subjected to SDS PAGE followed by western blot with 66549-1-Ig (HuR/ELAVL1 antibody) at dilution of 1:20000 incubated at room temperature for 1.5 hours.



WB result of HuR/ELAVL1 antibody (66549-1-Ig; 1:120000; incubated at room temperature for 1.5 hours) with sh-Control and sh-HuR transfected HEK-293 cells.



Immunofluorescent analysis of (4% PFA) fixed HepG2 cells using HuR/ELAVL1 antibody (66549-1-Ig, Clone: 1A11H2) at dilution of 1:400 and Coralite@488-Conjugated Goat Anti-Mouse IgG(H+L), CL594-Phalloidin (red).