

For Research Use Only

Lysozyme Monoclonal antibody

Catalog Number: 66456-1-Ig **3 Publications**



Basic Information

Catalog Number: 66456-1-Ig	GenBank Accession Number: BC004147	Purification Method: Protein A purification
Size: 150ul, Concentration: 2100 ug/ml by Nanodrop and 1000 ug/ml by Bradford method using BSA as the standard;	GeneID (NCBI): 4069	CloneNo.: 2G5A8
Source: Mouse	UNIPROT ID: P61626	Recommended Dilutions: WB 1:500-1:2000 IHC 1:500-1:2000
Isotype: IgG2a	Full Name: lysozyme (renal amyloidosis)	
Immunogen Catalog Number: AG6917	Calculated MW: 17 kDa	
	Observed MW: 15-17 kDa	

Applications

Tested Applications: WB, IHC, ELISA	Positive Controls: WB : human spleen tissue, RAW 264.7 cells, pig spleen tissue, rat spleen tissue IHC : human colon tissue,
Cited Applications: WB, IHC	
Species Specificity: human, mouse, rat, pig	
Cited Species: human, mouse, rat	
Note-IHC: suggested antigen retrieval with TE buffer pH 9.0; (*) Alternatively, antigen retrieval may be performed with citrate buffer pH 6.0	

Background Information

LYZ(Lysozyme C) is also named as LZM and belongs to the glycosyl hydrolase 22 family. It catalyzes the hydrolysis of the bacterial cell wall beta(1-4) glycosidic linkages between N-acetylmuramic acid and N-acetylglucosamine. In tissues and body fluids this protein is associated with the monocyte-macrophage system and enhance the activity of immunoagents. LYZ is capable of both hydrolysis and transglycosylation; it shows also a slight esterase activity. Defects in LYZ are a cause of amyloidosis type 8 (AMYL8). The full length protein has a signal peptide with 18 amino acid.

Notable Publications

Author	Pubmed ID	Journal	Application
Yaofei Jiang	39415331	Clin Transl Med	IHC
Ming Chen	39313273	J Pharmacol Sci	IHC
Xin Xu	37481722	Cell Rep	WB

Storage

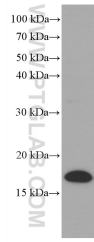
Storage:
Store at -20°C. Stable for one year after shipment.
Storage Buffer:
PBS with 0.02% sodium azide and 50% glycerol pH 7.3.
Aliquoting is unnecessary for -20°C storage

*** 20ul sizes contain 0.1% BSA

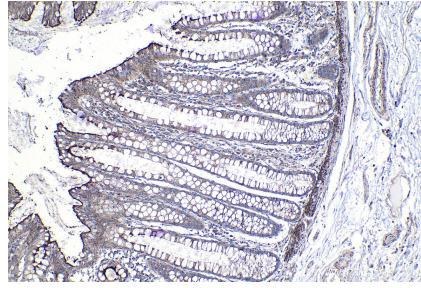
For technical support and original validation data for this product please contact:
T: 1 (888) 4PTGLAB (1-888-478-4522) (toll free in USA), or 1(312) 455-8498 (outside USA)
E: proteintech@ptglab.com
W: ptglab.com

This product is exclusively available under Proteintech Group brand and is not available to purchase from any other manufacturer.

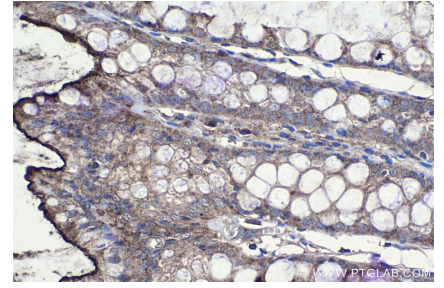
Selected Validation Data



human spleen tissue were subjected to SDS PAGE followed by western blot with 66456-1-Ig (Lysozyme antibody) at dilution of 1:1000 incubated at room temperature for 1.5 hours.



Immunohistochemical analysis of paraffin-embedded human colon tissue slide using 66456-1-Ig (Lysozyme antibody) at dilution of 1:1000 (under 10x lens). Heat mediated antigen retrieval with Tris-EDTA buffer (pH 9.0).



Immunohistochemical analysis of paraffin-embedded human colon tissue slide using 66456-1-Ig (Lysozyme antibody) at dilution of 1:1000 (under 40x lens). Heat mediated antigen retrieval with Tris-EDTA buffer (pH 9.0).