

For Research Use Only

# SERPINA7 Monoclonal antibody

Catalog Number: 66454-1-Ig **1 Publications**



## Basic Information

<b>Catalog Number:</b> 66454-1-Ig	<b>GenBank Accession Number:</b> BC020747	<b>Purification Method:</b> Protein A purification
<b>Size:</b> 150ul , Concentration: 1700 µg/ml by Nanodrop and 1000 µg/ml by Bradford method using BSA as the standard;	<b>GeneID (NCBI):</b> 6906	<b>CloneNo.:</b> 1B11B10
<b>Source:</b> Mouse	<b>Full Name:</b> serpin peptidase inhibitor, clade A (alpha-1 antiproteinase, antitrypsin), member 7	<b>Recommended Dilutions:</b> WB 1:1000-1:4000 IHC 1:250-1:1000 IF 1:200-1:800
<b>Isotype:</b> IgG2a	<b>Calculated MW:</b> 415 aa, 46 kDa	
<b>Immunogen Catalog Number:</b> AG9823	<b>Observed MW:</b> 50 kDa	

## Applications

### Tested Applications:

IF, IHC, WB, ELISA

### Cited Applications:

IHC

### Species Specificity:

human, mouse, pig, rat

### Cited Species:

human

**Note-IHC: suggested antigen retrieval with TE buffer pH 9.0; (\*) Alternatively, antigen retrieval may be performed with citrate buffer pH 6.0**

### Positive Controls:

WB : human plasma tissue, human testis tissue

IHC : human liver cancer tissue, mouse liver tissue

IF : human liver cancer tissue,

## Background Information

### Notable Publications

Author	Pubmed ID	Journal	Application
Lingyan Chen	38027820	Heliyon	IHC

## Storage

### Storage:

Store at -20°C. Stable for one year after shipment.

### Storage Buffer:

PBS with 0.02% sodium azide and 50% glycerol pH 7.3.

Aliquoting is unnecessary for -20°C storage

\*\*\* 20ul sizes contain 0.1% BSA

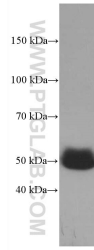
For technical support and original validation data for this product please contact:

T: 1 (888) 4PTGLAB (1-888-478-4522) (toll free in USA), or 1(312) 455-8498 (outside USA)

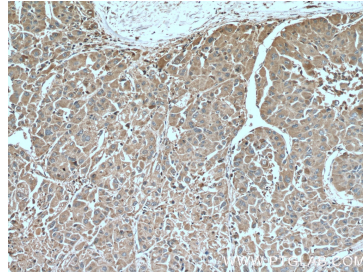
E: proteintech@ptglab.com  
W: ptglab.com

This product is exclusively available under Proteintech Group brand and is not available to purchase from any other manufacturer.

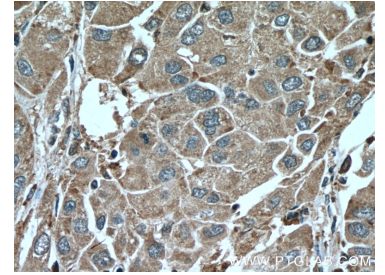
## Selected Validation Data



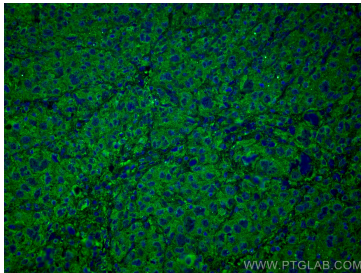
human plasma were subjected to SDS PAGE followed by western blot with 66454-1-Ig (SERPINA7 antibody) at dilution of 1:2000 incubated at room temperature for 1.5 hours.



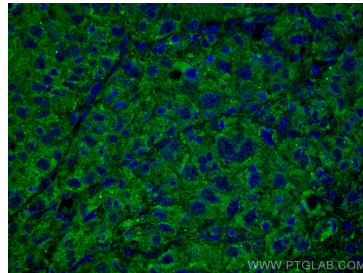
Immunohistochemical analysis of paraffin-embedded human liver cancer tissue slide using 66454-1-Ig (SERPINA7 antibody) at dilution of 1:500 (under 10x lens. Heat mediated antigen retrieval with Tris-EDTA buffer (pH 9.0).



Immunohistochemical analysis of paraffin-embedded human liver cancer tissue slide using 66454-1-Ig (SERPINA7 antibody) at dilution of 1:500 (under 40x lens. Heat mediated antigen retrieval with Tris-EDTA buffer (pH 9.0).



Immunofluorescent analysis of (4% PFA) fixed human liver cancer tissue using SERPINA7 antibody (66454-1-Ig, Clone: 1B11B10) at dilution of 1:400 and CoraLite®488-Conjugated AffiniPure Goat Anti-Mouse IgG(H+L).



Immunofluorescent analysis of (4% PFA) fixed human liver cancer tissue using SERPINA7 antibody (66454-1-Ig, Clone: 1B11B10) at dilution of 1:400 and CoraLite®488-Conjugated AffiniPure Goat Anti-Mouse IgG(H+L).