

For Research Use Only

KChIP1 Monoclonal antibody

Catalog Number: 66439-1-Ig



Basic Information

Catalog Number: 66439-1-Ig	GenBank Accession Number: BC050375	Purification Method: Protein G purification
Size: 150ul , Concentration: 1300 µg/ml by Nanodrop and 1000 µg/ml by Bradford method using BSA as the standard;	GeneID (NCBI): 30820	CloneNo.: 3D6C1
Source: Mouse	UNIPROT ID: Q9NZI2	Recommended Dilutions: WB 1:1000-1:4000 IHC 1:50-1:500 IF-P 1:200-1:800
Isotype: IgG1	Full Name: Kv channel interacting protein 1	
Immunogen Catalog Number: AG5494	Calculated MW: 227 aa, 27 kDa	
	Observed MW: 25 kDa	

Applications

Tested Applications:

WB, IF, IHC, ELISA

Species Specificity:

human, mouse

Note-IHC: suggested antigen retrieval with TE buffer pH 9.0; (*) Alternatively, antigen retrieval may be performed with citrate buffer pH 6.0

Positive Controls:

WB : human cerebellum tissue, fetal human brain tissue, human spleen tissue

IHC : human brain tissue, human heart tissue

IF-P : mouse brain tissue,

Background Information

Human K(v) channel interacting protein 1 (KCHIP1) is a new member of the neural calcium binding protein superfamily. Members of the KCNIP family are small calcium binding proteins. They all have EF-hand-like domains, and differ from each other in the N-terminus. They are integral subunit components of native Kv4 channel complexes. They may regulate A-type currents, and hence neuronal excitability, in response to changes in intracellular calcium. KCHIP1 is a neuronal calcium sensor protein that is predominantly expressed at GABAergic synapses and it has been related with modulation of K(+) channels, GABAergic transmission and cell death.

Storage

Storage:

Store at -20°C. Stable for one year after shipment.

Storage Buffer:

PBS with 0.02% sodium azide and 50% glycerol pH 7.3.

Aliquoting is unnecessary for -20°C storage

***** 20ul sizes contain 0.1% BSA**

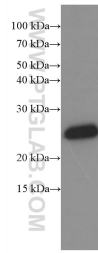
For technical support and original validation data for this product please contact:

T: 1 (888) 4PTGLAB (1-888-478-4522) (toll free in USA), or 1(312) 455-8498 (outside USA)

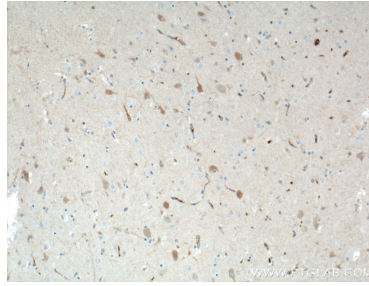
E: proteintech@ptglab.com
W: ptglab.com

This product is exclusively available under Proteintech Group brand and is not available to purchase from any other manufacturer.

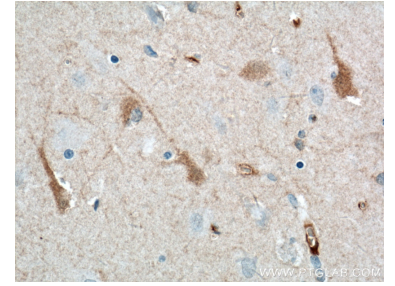
Selected Validation Data



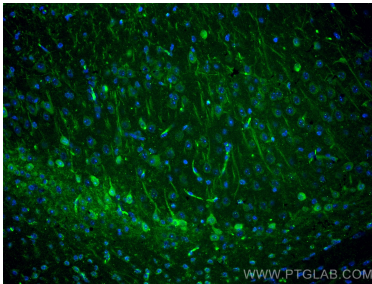
human cerebellum tissue were subjected to SDS PAGE followed by western blot with 66439-1-Ig (KChIP1 antibody at dilution of 1:2000 incubated at room temperature for 1.5 hours.



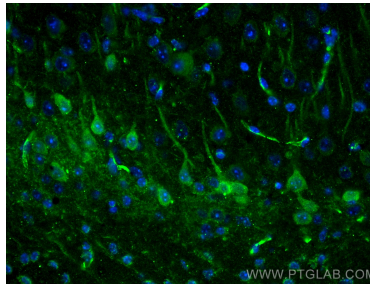
Immunohistochemical analysis of paraffin-embedded human brain tissue slide using 66439-1-Ig (KChIP1 antibody at dilution of 1:200 (under 10x lens). Heat mediated antigen retrieval with Tris-EDTA buffer (pH 9.0).



Immunohistochemical analysis of paraffin-embedded human brain tissue slide using 66439-1-Ig (KChIP1 antibody at dilution of 1:200 (under 40x lens). Heat mediated antigen retrieval with Tris-EDTA buffer (pH 9.0).



Immunofluorescent analysis of (4% PFA) fixed mouse brain tissue using KChIP1 antibody (66439-1-Ig, Clone: 3D6C1) at dilution of 1:400 and CoraLite®488-Conjugated AffiniPure Goat Anti-Mouse IgG(H+L).



Immunofluorescent analysis of (4% PFA) fixed mouse brain tissue using KChIP1 antibody (66439-1-Ig, Clone: 3D6C1) at dilution of 1:400 and CoraLite®488-Conjugated AffiniPure Goat Anti-Mouse IgG(H+L).