

For Research Use Only

NFE2 Monoclonal antibody

Catalog Number: 66436-1-Ig



Basic Information

| | | |
|--|--|---|
| Catalog Number: 66436-1-Ig | GenBank Accession Number: BC005044 | Purification Method: Protein A purification |
| Size: 150ul , Concentration: 1600 µg/ml by Nanodrop and 1000 µg/ml by Bradford method using BSA as the standard; | GeneID (NCBI): 4778 | CloneNo.: 1D7C8 |
| Source: Mouse | UNIPROT ID: Q16621 | Recommended Dilutions: WB 1:1000-1:8000 |
| Isotype: IgG1 | Full Name: nuclear factor (erythroid-derived 2), 45kDa | |
| Immunogen Catalog Number: AG1570 | Calculated MW: 41 kDa | |
| | Observed MW: 45 kDa | |

Applications

| | |
|--|--|
| Tested Applications: WB, ELISA | Positive Controls: WB : HL-60 cells, K-562 cells |
| Species Specificity: human | |

Background Information

The transcription factor p45 nuclear factor-erythroid-derived 2(NFE2) is one component of the NF-E2 complex that essential for regulating reythroid and megakaryocytic maturation and differentiation. It also plays crucial roles in erythroid and megakaryocytic lineages. NFE2 recognizes the TCAT/C sequence of the AP-1-like core palindrome present in a number of erythroid and megakaryocytic gene promoters, and acts as a activator. And it may has a role in all aspects of hemoglobin production from globin and heme synthesis to procurement of iron.

Storage

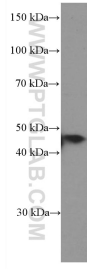
Storage:
Store at -20°C. Stable for one year after shipment.
Storage Buffer:
PBS with 0.02% sodium azide and 50% glycerol pH 7.3.
Aliquoting is unnecessary for -20°C storage

*** 20ul sizes contain 0.1% BSA

For technical support and original validation data for this product please contact:
T: 1 (888) 4PTGLAB (1-888-478-4522) (toll free in USA), or 1(312) 455-8498 (outside USA)
E: proteintech@ptglab.com
W: ptglab.com

This product is exclusively available under Proteintech Group brand and is not available to purchase from any other manufacturer.

Selected Validation Data



HL-60 cells were subjected to SDS PAGE followed by western blot with 66436-1-Ig (NFE2 Antibody) at dilution of 1:4000 incubated at room temperature for 1.5 hours.